

Elsevier Editorial System(tm) for Membrane Science  
Manuscript Draft

Manuscript Number:

Title: Two-compartment bipolar membrane electro dialysis for splitting of sodium formate into formic acid and sodium hydroxide: modelling

Article Type: Full Length Article

Keywords: Bipolar membrane electro dialysis, two-compartment electro dialysis, salt splitting, formic acid, modelling.

Corresponding Author: Prof Mohammed RAKIB, PhD

Corresponding Author's Institution: Ecole Centrale Paris

First Author: Jesus Salvador. Jaime-Ferrer, Dr

Order of Authors: Jesus Salvador. Jaime-Ferrer, Dr; Estelle Couallier, Dr; Philippe Viers, DR; Mohammed RAKIB, PhD

Abstract: The aim of this work is to model the two-compartment bipolar membrane electro dialysis for organic salts acidification. The salt studied is sodium formate which splits into formic acid and sodium hydroxide thanks to water splitting by bipolar membrane. The contamination of sodium hydroxide by formate ion is due to diffusion of molecular formic acid through the bipolar membrane and to leakage of formate ion through the same membrane under the applied current. The cation-exchange membrane does not participate to contamination of sodium hydroxide. But the leakage of hydroxide ion through the cation-exchange membrane is the major factor that influences the current efficiency of electro dialysis. The average current efficiency decreases with time principally because the sodium hydroxide concentration increases. The development of a membrane with limited hydroxide leakage is desirable.

Suggested Reviewers: Gerald Pourcelly  
gerald.pourcelly@iemm.univ-montp2.fr

Tongwen Xu

twxu@ustc.edu.cn

Lasaad Dammak

dammak@univ-paris12.fr

M. Rakib  
Professor  
ECP/LGPM

Dear editor

This article deals with two-compartment bipolar membrane electro dialysis and modelling. The flux rates of leakage of formate ion and sodium ion through the bipolar membrane are determined. The model gives minor and major species concentration.

Best regards

1  
2  
3  
4 **Two-compartment bipolar membrane electro dialysis for splitting of sodium formate**  
5 **into formic acid and sodium hydroxide: modelling**

6  
7 **J. S. Jaime-Ferrer, E. Couallier, Ph. Viers, M. Rakib\***

8  
9 Laboratoire de Génie des Procédés et Matériaux

10  
11 Ecole Centrale Paris

12  
13 Grande Voie des Vignes, 92295 Châtenay-Malabry Cedex

14  
15  
16 \*Author for correspondence. Tel: +33 1 41 13 15 56; fax: +33 1 41 13 11 33; E-mail  
17 address: [mohammed.rakib@ecp.fr](mailto:mohammed.rakib@ecp.fr) (M. Rakib)

18  
19  
20  
21  
22  
23  
24  
25  
26 Abstract:

27  
28 The aim of this work is to model the two-compartment bipolar membrane electro dialysis for  
29 organic salts acidification. The salt studied is sodium formate which splits into formic acid  
30 and sodium hydroxide thanks to water splitting by bipolar membrane. The contamination of  
31 sodium hydroxide by formate ion is due to diffusion of molecular formic acid through the  
32 bipolar membrane and to leakage of formate ion through the same membrane under the  
33 applied current. The cation-exchange membrane does not participate to contamination of  
34 sodium hydroxide. But the leakage of hydroxide ion through the cation-exchange membrane  
35 is the major factor that influences the current efficiency of electro dialysis. The average  
36 current efficiency decreases with time principally because the sodium hydroxide  
37 concentration increases. The development of a membrane with limited hydroxide leakage is  
38 desirable.

39  
40  
41  
42  
43  
44  
45  
46  
47  
48  
49  
50  
51  
52  
53  
54  
55  
56  
57  
58  
59  
60  
61  
62  
63  
64  
65  
66  
67  
68  
69  
70  
71  
72  
73  
74  
75  
76  
77  
78  
79  
80  
81  
82  
83  
84  
85  
86  
87  
88  
89  
90  
91  
92  
93  
94  
95  
96  
97  
98  
99  
100  
101  
102  
103  
104  
105  
106  
107  
108  
109  
110  
111  
112  
113  
114  
115  
116  
117  
118  
119  
120  
121  
122  
123  
124  
125  
126  
127  
128  
129  
130  
131  
132  
133  
134  
135  
136  
137  
138  
139  
140  
141  
142  
143  
144  
145  
146  
147  
148  
149  
150  
151  
152  
153  
154  
155  
156  
157  
158  
159  
160  
161  
162  
163  
164  
165  
166  
167  
168  
169  
170  
171  
172  
173  
174  
175  
176  
177  
178  
179  
180  
181  
182  
183  
184  
185  
186  
187  
188  
189  
190  
191  
192  
193  
194  
195  
196  
197  
198  
199  
200  
201  
202  
203  
204  
205  
206  
207  
208  
209  
210  
211  
212  
213  
214  
215  
216  
217  
218  
219  
220  
221  
222  
223  
224  
225  
226  
227  
228  
229  
230  
231  
232  
233  
234  
235  
236  
237  
238  
239  
240  
241  
242  
243  
244  
245  
246  
247  
248  
249  
250  
251  
252  
253  
254  
255  
256  
257  
258  
259  
260  
261  
262  
263  
264  
265  
266  
267  
268  
269  
270  
271  
272  
273  
274  
275  
276  
277  
278  
279  
280  
281  
282  
283  
284  
285  
286  
287  
288  
289  
290  
291  
292  
293  
294  
295  
296  
297  
298  
299  
300  
301  
302  
303  
304  
305  
306  
307  
308  
309  
310  
311  
312  
313  
314  
315  
316  
317  
318  
319  
320  
321  
322  
323  
324  
325  
326  
327  
328  
329  
330  
331  
332  
333  
334  
335  
336  
337  
338  
339  
340  
341  
342  
343  
344  
345  
346  
347  
348  
349  
350  
351  
352  
353  
354  
355  
356  
357  
358  
359  
360  
361  
362  
363  
364  
365  
366  
367  
368  
369  
370  
371  
372  
373  
374  
375  
376  
377  
378  
379  
380  
381  
382  
383  
384  
385  
386  
387  
388  
389  
390  
391  
392  
393  
394  
395  
396  
397  
398  
399  
400  
401  
402  
403  
404  
405  
406  
407  
408  
409  
410  
411  
412  
413  
414  
415  
416  
417  
418  
419  
420  
421  
422  
423  
424  
425  
426  
427  
428  
429  
430  
431  
432  
433  
434  
435  
436  
437  
438  
439  
440  
441  
442  
443  
444  
445  
446  
447  
448  
449  
450  
451  
452  
453  
454  
455  
456  
457  
458  
459  
460  
461  
462  
463  
464  
465  
466  
467  
468  
469  
470  
471  
472  
473  
474  
475  
476  
477  
478  
479  
480  
481  
482  
483  
484  
485  
486  
487  
488  
489  
490  
491  
492  
493  
494  
495  
496  
497  
498  
499  
500  
501  
502  
503  
504  
505  
506  
507  
508  
509  
510  
511  
512  
513  
514  
515  
516  
517  
518  
519  
520  
521  
522  
523  
524  
525  
526  
527  
528  
529  
530  
531  
532  
533  
534  
535  
536  
537  
538  
539  
540  
541  
542  
543  
544  
545  
546  
547  
548  
549  
550  
551  
552  
553  
554  
555  
556  
557  
558  
559  
560  
561  
562  
563  
564  
565  
566  
567  
568  
569  
570  
571  
572  
573  
574  
575  
576  
577  
578  
579  
580  
581  
582  
583  
584  
585  
586  
587  
588  
589  
590  
591  
592  
593  
594  
595  
596  
597  
598  
599  
600  
601  
602  
603  
604  
605  
606  
607  
608  
609  
610  
611  
612  
613  
614  
615  
616  
617  
618  
619  
620  
621  
622  
623  
624  
625  
626  
627  
628  
629  
630  
631  
632  
633  
634  
635  
636  
637  
638  
639  
640  
641  
642  
643  
644  
645  
646  
647  
648  
649  
650  
651  
652  
653  
654  
655  
656  
657  
658  
659  
660  
661  
662  
663  
664  
665  
666  
667  
668  
669  
670  
671  
672  
673  
674  
675  
676  
677  
678  
679  
680  
681  
682  
683  
684  
685  
686  
687  
688  
689  
690  
691  
692  
693  
694  
695  
696  
697  
698  
699  
700  
701  
702  
703  
704  
705  
706  
707  
708  
709  
710  
711  
712  
713  
714  
715  
716  
717  
718  
719  
720  
721  
722  
723  
724  
725  
726  
727  
728  
729  
730  
731  
732  
733  
734  
735  
736  
737  
738  
739  
740  
741  
742  
743  
744  
745  
746  
747  
748  
749  
750  
751  
752  
753  
754  
755  
756  
757  
758  
759  
760  
761  
762  
763  
764  
765  
766  
767  
768  
769  
770  
771  
772  
773  
774  
775  
776  
777  
778  
779  
780  
781  
782  
783  
784  
785  
786  
787  
788  
789  
790  
791  
792  
793  
794  
795  
796  
797  
798  
799  
800  
801  
802  
803  
804  
805  
806  
807  
808  
809  
810  
811  
812  
813  
814  
815  
816  
817  
818  
819  
820  
821  
822  
823  
824  
825  
826  
827  
828  
829  
830  
831  
832  
833  
834  
835  
836  
837  
838  
839  
840  
841  
842  
843  
844  
845  
846  
847  
848  
849  
850  
851  
852  
853  
854  
855  
856  
857  
858  
859  
860  
861  
862  
863  
864  
865  
866  
867  
868  
869  
870  
871  
872  
873  
874  
875  
876  
877  
878  
879  
880  
881  
882  
883  
884  
885  
886  
887  
888  
889  
890  
891  
892  
893  
894  
895  
896  
897  
898  
899  
900  
901  
902  
903  
904  
905  
906  
907  
908  
909  
910  
911  
912  
913  
914  
915  
916  
917  
918  
919  
920  
921  
922  
923  
924  
925  
926  
927  
928  
929  
930  
931  
932  
933  
934  
935  
936  
937  
938  
939  
940  
941  
942  
943  
944  
945  
946  
947  
948  
949  
950  
951  
952  
953  
954  
955  
956  
957  
958  
959  
960  
961  
962  
963  
964  
965  
966  
967  
968  
969  
970  
971  
972  
973  
974  
975  
976  
977  
978  
979  
980  
981  
982  
983  
984  
985  
986  
987  
988  
989  
990  
991  
992  
993  
994  
995  
996  
997  
998  
999  
1000

## 1. Introduction

Bipolar membrane electro dialysis (BMED) is used to regenerate organic acids and sodium hydroxide from sodium organic salts [1-4]. It is based on the ability of a bipolar membrane to split water into  $H^+$  and  $OH^-$  at membrane bilayer interface. The two-compartment configuration with a cation-exchange membrane is the most widely used configuration

1  
2  
3  
4 because it is simpler and more favourable in terms of energy than the three-compartment  
5 configuration. In the two-compartment configuration represented in Fig. 1, This Fig refers to  
6 regeneration of formic acid and sodium hydroxide from sodium formate.  $H^+$  produced by the  
7 bipolar membrane forms formic acid with formate (almost quantitatively due to the weak acid  
8 character of formic acid  $pK = 3.75$ ) while  $OH^-$  produced by the other face of the bipolar  
9 membrane and  $Na^+$  which crosses the cation-exchange membrane forms sodium hydroxide.  
10 The acid is obtained in a mixture with its salt.

11  
12 The three-compartment electro dialysis was studied and modelled [5]. The mass balance of the  
13 three-compartment electro dialysis may be predicted knowing volume variations with current  
14 quantity for acid, base and salt solutions. Diffusion rates of molecular formic acid through  
15 bipolar and anion-exchange membrane and the leakage rate of hydroxide ion through the  
16 cation-exchange membrane are the model parameters. The current efficiency of formic acid  
17 production is a function of diffusion of molecular acid through the anion-exchange membrane  
18 and the bipolar membrane. Among carboxylic acids, formic acid is less studied than others  
19 like acetic or lactic acids [6,7].

20  
21 Wilhem et al. [8] studied the salt ion fluxes across bipolar membranes and estimated the  
22 proportion of contaminant to 1% molar when the concentrations reach  $4 \text{ mol dm}^{-3}$ . To our  
23 knowledge, no predictive model has been developed giving current efficiency for the two-  
24 compartment configuration.

25  
26 Ideally, sodium hydroxide solutions obtained by two-compartment bipolar membrane  
27 electro dialysis with cation-exchange membrane is recovered pure in solution and no formate  
28 is present. However, this is not the case. Some formate pollutes the sodium hydroxide solution  
29 and this may be undesired.

30  
31 Carboxylic acids diffusion was mentioned as one factor reducing the current efficiency. Koter  
32 S. [9] studied the weak acids production. The modelling given is very complex. Except [5,  
33 10], literature is poor concerning the conversion of sodium formate into formic acid and  
34 sodium hydroxide by bipolar membrane electro dialysis.

35  
36 The performance of an electromembrane process is given in term of current efficiency which  
37 represents the ratio of the mole number produced or transferred and the number of faradays  
38 passed through the system. The integral or average current efficiency (ICE) between time 0  
39 and time t is defined by the relation:

$$ICE_{0,t} = \frac{\Delta N}{iAt / F} \quad (1)$$

1  
2  
3  
4 where  $\Delta N$  is the variation of mole number of the component between time 0 and time  $t$ ,  $i$  the  
5 current density constant during time  $t$ ,  $A$  is the membrane area,  $F$  is the faraday constant  
6 (96485 A s mol<sup>-1</sup> = 26.8 Ah mol<sup>-1</sup>)  
7

8  
9 The differential current efficiency (DCE) is defined as:

$$10 \quad DCE_t = \frac{dN}{iAdt/F} \quad (2)$$

11  
12 The aim of this study is to model the functioning of the two-compartment bipolar membrane  
13 electro dialysis configuration. It is also to identify the contamination of sodium hydroxide by  
14 formate ion and the factors limiting the current efficiency of formic acid production.  
15  
16  
17  
18

## 19 20 21 **2. Experimental details**

### 22 23 **2.1. Experimental set-up**

24  
25 CMB cation exchange membrane and BP-1 bipolar membrane were used. These membranes  
26 were supplied by Eurodia Industries. Electrodialysis was performed with a cell stack EUR  
27 2B-BIP supplied by the same company. It was composed of 6 cells with two-compartments  
28 (Fig. 1). The active area of each cell was 2 dm<sup>2</sup>. Two nickel electrodes with NaOH 2 mol dm<sup>-3</sup>  
29 rinsing solution terminated the stack. They did not interfere with the electro dialysis.  
30 Temperature was measured but not controlled (average temperature has been taken). A  
31 constant current was applied. The circulation of solutions in the cell was started 5 to 10 min  
32 before the current was switched on.  
33

34  
35 The experiments of diffusion of formic acid from a mixture of formic acid sodium formate  
36 were done as described in a previous paper [5].  
37  
38  
39

### 40 41 **2.2. Reagents and solutions:**

42  
43 Sodium formate 98% and sodium hydroxide 37% were supplied by VWR.

44  
45 Initial concentration of sodium formate solution was about 2 mol dm<sup>-3</sup> and initial  
46 concentration of sodium hydroxide was about 0.5 to 1 mol dm<sup>-3</sup>. The volume of both solutions  
47 was 1 to 2 dm<sup>3</sup> for 6 cells  
48

49  
50 These solutions were titrated for acid and base contents. Formate (as formic acid or sodium  
51 formate) and sodium ion in low concentration were determined using ionic chromatography  
52 (Dionex).  
53  
54  
55  
56  
57  
58  
59  
60  
61  
62  
63  
64  
65

### 3. Results and discussion

The model proposed describes the functioning of a two-compartment bipolar membrane electro dialysis with a cation-exchange membrane in alternation with bipolar membrane. The model is able to describe the contamination of sodium hydroxide solution by formate and to give the mass-balance of the electro dialyser.

#### 3.1. Modelling

The subscripts a and b refer to acid/salt and sodium hydroxide solutions respectively. According to Fig. 1, formic acid may diffuse through bipolar membrane into sodium hydroxide solutions. Also, leakage of formiate ion through the bipolar membrane participates to contamination of sodium hydroxide solution. The transfer of formate ion through the cation-exchange membrane is unlikely due to migration. Fig. 1 summarises the exchange of species in the electro dialysis device. Some fluxes are desired (sodium from salt compartment to base compartment,  $H^+$  and  $OH^-$  from the bipolar membrane to acid/salt and base compartment respectively). The others are undesired.

##### 3.1.1. Model assumptions

To model the two-compartment bipolar membrane electro dialysis the following assumptions are made:

**Assumption 1:** Hydroxide ion migration (leakage) through the cation-exchange membrane is observed. It is the same than for the three-compartment configuration. It depends only on sodium hydroxide solution concentration, on temperature and on the membrane. The hydroxide leakage flux rate is noted  $h$ . The number of moles of hydroxide ion  $N_{OH}$  crossing the unit area of cation-exchange membrane during an unit of time is  $N_{OH} = hi[NaOH]_b$  where  $[NaOH]_b$  is the concentration of sodium hydroxide in base compartment.

**Assumption 2:** diffusion of formate ion through the cation-exchange membrane is negligible because migration is the major effect. Without current diffusion of formate ion through the cation-exchange membrane occurs. The diffusion of molecular acid through the cation-exchange membrane is counteracted by sodium hydroxide ion leakage. Due to the passage of hydroxide ion through this membrane, reaction of formic acid with sodium hydroxide occurs in the membrane or in the boundary layers. This leads to formate ion which migrates towards the anode making an U-turn. So, diffusion of formate ion through the cation exchange membrane does not occur during electro dialysis.

1  
2  
3  
4 **Assumption 3:** The formic acid diffusion through the bipolar membrane is proportional to  
5 acid concentration. This will be checked.  
6  
7

### 8 **3.1.2. Diffusion and migration**

9  
10 For diffusion of neutral species through surface A of solution-membrane the number of moles  
11 crossing A during a time dt, is written:  
12

$$13 \quad dN = -D_m A \frac{d[X]}{dx} dt \quad (3)$$

14  
15 x is the direction perpendicular to the membrane and  $D_m$  is the diffusion coefficient of X in  
16 the solution or in the membrane.  
17

18  
19 The concentration of X in solution and the boundary layers is constant since an increase of  
20 mixing had no effect. The concentration in the receiving solution is very low and could be  
21 taken equal to zero. Thus the concentration difference in the membrane is nearly [X]. The  
22 diffusion number of moles may be written:  
23

$$24 \quad dN = -\frac{D}{e} A [X] dt \quad (4)$$

25  
26 Where D is the diffusion coefficient in the membrane and e is the thickness of the membrane.  
27 For diffusion and migration the number of moles crossing A during a time dt is given by  
28 Nernst-Planck equation:  
29

$$30 \quad dN = -DA \left( \frac{d[X]}{dx} + [X] z_X \frac{d\phi}{dx} \right) dt \quad (5)$$

31  
32 where  $z_X$  is the charge of X and  $\phi$  is the electrical potential. If the migration takes place alone  
33 the flux is proportional to the concentration [X] and proportional to the current.  
34

35  
36 Diffusion or migration of a species X is proportional to X concentration in the solution from  
37 which it diffuses or migrates, to surface area of membrane and duration of diffusion or  
38 migration considered. The mole number dN of species X (diffusion:  $dN_{dif}$ , migration:  $dN_{mig}$ ,)  
39 is written:  
40

$$41 \quad dN_{dif} = k_{dif} A [X] dt \quad (6)$$

$$42 \quad dN_{mig} = k_{mig} i A [X] dt \quad (7)$$

43  
44  $k_{dif}$  and  $k_{mig}$  are the flux rates with:  $k_{dif} = k_{mig} = .D/e$   
45  
46  
47  
48  
49  
50  
51  
52  
53  
54  
55  
56  
57  
58  
59  
60  
61  
62  
63  
64  
65



### 3.1.3. Mass balance of the cell stack

The mass-balance is written taking into account:

- The migration of formate ion through the bipolar membrane (leakage)
- The migration of sodium ion through the bipolar membrane (leakage)

Thus the number of moles of  $H^+$  and  $OH^-$  produced by the bipolar membrane (surface A) during time  $dt$  is given by:

$$dn_{H^+} = dn_{OH^-} = \frac{iA}{F} dt - dn_{formate} - dn_{Na^+} \quad (8)$$

This is because the current is transported by all ions (the total current density being  $i$ )

If  $f$  and  $g$  are the flux rates for leakage of formate ion and sodium ion respectively, then:

$$dn_{formate} = fiA[HCOO^-]_a dt \quad (9)$$

and

$$dn_{Na^+} = giA[Na^+]_b dt \quad (10)$$

The acid balance is the following:

$$d(V_a[HCOOH]_a) = \left( \frac{iA}{F} - fiA[HCOO^-]_a - giA[Na^+]_b - k_{bip} A[HCOOH]_a - hiA[OH^-]_b \right) dt \quad (11)$$

The flux rate of diffusion of formic acid through the bipolar membrane has been determined [5]:  $k_{bip} = 0.0045$  to  $0.005 \text{ dm h}^{-1}$  at 298 K with an activation energy of  $18 \text{ kJ mol}^{-1}$ .

The value of flux rate of leakage of hydroxide anion through the cation exchange membrane is  $h = 0.0032 \text{ dm}^3 \text{ Ah}^{-1}$  at 298K. The activation energy is estimated to  $23 \text{ kJ mol}^{-1}$ .

This equation expresses that the acid accumulation is equal to the number of moles of  $H^+$  produced minus the acid lost by diffusion from compartment a to compartment b and the acid which reacts with the leaked hydroxide ions.

The salt balance is given by the equation:

$$d(V_a[HCOO^-]_a) = -dn_{H^+} - fiA[HCOO^-]_a dt + hiA[OH^-]_b dt = \left( -\frac{iA}{F} + giA[Na^+]_b + hiA[OH^-]_b \right) dt \quad (12)$$

Leakage of formate ion through the bipolar membrane does not appear formally in this equation because its transport takes part in total current passage  $iAdt/F$ .

The hydroxide ion balance gives:

$$d(V_b[OH^-]_b) = dn_{OH^-} - (hiA[OH^-]_b + k_{bip}A[HCOOH]_a)dt = \left(\frac{iA}{F} - fiA[HCOO^-]_a - giA[Na^+]_b - hiA[OH^-]_b - k_{bip}A[HCOOH]_a\right)dt \quad (13)$$

Formate ion (contaminant) in sodium hydroxide solution is given by the following equation:

$$d(V_b[HCOO^-]_b) = (k_{bip}A[HCOOH]_a + fiA[HCOO^-]_a)dt \quad (14)$$

The first member of equations 11 to 14 is the differentiation of the product of a volume and a concentration both function of time. Hence:

$$d(V[X]) = Vd[X] + [X]dV \quad (15)$$

The volume variations are linear versus time and versus the current [11].

$$dV_a = aiAdt \text{ et } dV_b = biAdt \quad (16)$$

a and b are determined experimentally.

### 3.2. Application of the model

In order to test this model, the experimental data obtained during electro dialysis experiments were fitted to equations 11 to 16. The calculation is done as follows: the initial conditions are stated. Then the calculation is undertaken for dt increment: The elemental variations  $d[HCOOH]_a$ ,  $d[HCOO^-]_a$ ,  $d[OH^-]_b$  are calculated using equations 11 – 15 and using the previous values for the concentrations  $[HCOOH]_a$ ,  $[HCOO^-]_a$  and  $[OH^-]_b$ . Then the actual values for  $[HCOOH]_a$ ,  $[HCOO^-]_a$  and  $[OH^-]_b$  are obtained. The concentration of formate ion in sodium hydroxide  $[HCOO^-]_b$  is computed also (equation 15)

#### 3.2.1 Volume variations

Fig. 2 reports variations of specific volumes of the two solutions versus specific current quantity (quantity of electricity per an unit of area surface). Different experiments are considered in Fig. 2 included different current densities. The variations are linear

Acid/salt solution:  $\Delta V_a = aiAt$  with  $a = -3.1 \cdot 10^{-3} \text{ dm}^3 \text{ Ah}^{-1}$

Base solution:  $\Delta V_b = biAt$  with  $b = 2.1 \cdot 10^{-3} \text{ dm}^3 \text{ Ah}^{-1}$

These volume variations are essentially due to water transfer by electroosmosis.

#### 3.2.2 Sodium transfer through the bipolar membrane

The sodium ion transfer from base solution to acid/salt solution through the bipolar membrane can not be measured in the two compartment configuration because of the presence of sodium

ion in the receiving solution. This study was done with the three-compartment configuration. The leakage of sodium is quite the same in the two configurations. Sodium ion was determined in acid compartment. Fig. 3 shows the variations of mole number of sodium in the acid compartment versus time for an experiment where sodium hydroxide solution and sodium formate solution are renewed. For sodium hydroxide concentration between 1 and 3 mol dm<sup>-3</sup> (average value 2 mol dm<sup>-3</sup>) and a current density of 5 A dm<sup>-2</sup> it is found that:

$$\frac{dN_{Na^+}}{Adt} = 210^{-4} \text{ mol.dm}^{-2}.h^{-1} \quad (17)$$

$$dN_{Na^+} = giA[\overline{NaOH}]_b dt \quad (18)$$

Where  $[\overline{NaOH}]_b$  is the average concentration of sodium hydroxide solution.

This permits the calculation of the sodium ion flux rate of leakage through the bipolar membrane. The magnitude of the value of the flux rate  $g$  may be calculated  $g \approx 2 \cdot 10^{-5} \text{ dm}^3 \text{ Ah}^{-1}$ .

### 3.2.3 Fitting of formate in sodium hydroxide

Before starting, a non-negligible concentration of formate is detected in sodium hydroxide solution. This is probably due to diffusion of sodium formate when no current is applied. It is better to limit the contact between solutions when the current is switched off.

The mole number of formate crossing the membranes between time 0 and time  $t$ ,  $N_F$ , is calculated from the concentrations and the volumes at these moments.

$$N_F = \frac{V_b(t)}{A} [HCOO]_b - N_{F0} = \frac{V_b(t)}{A} [HCOO]_b - \frac{V_b(0)}{A} [HCOO]_{b0} \quad (18)$$

where  $[HCOO]_{b0}$  and  $V_b(0)$  are respectively the concentration of formate in sodium hydroxide solution and the volume of this solution at  $t = 0$ .

Fig. 4 reports the variations of the mole number of formate crossing the unit area of bipolar membrane versus time. The experimental points are drawn (calculated by equation.18 with an interval of error estimated to 10%). The average temperature is near 300 K. Several experiments were made. Not all are reported here. The experiments show that the current density has an effect on the passage of formate: the higher the current density the higher the flux through membranes. The curve fitting is done by the method of least squares. It leads to the following value of the flux rate  $f = (2.2 \pm 0.2) \cdot 10^{-4} \text{ dm}^3 \text{ Ah}^{-1}$ . The value of the flux rate of leakage of sodium ion through the bipolar membrane,  $g$ , is about  $2 \cdot 10^{-5} \text{ dm}^3 \text{ Ah}^{-1}$  but this small value has no effect on the passage of formate through the membrane. The low

1  
2  
3  
4 dispersion of  $f$  values shows that the model describes well the contamination of sodium  
5 hydroxide solution by formate ion. Thus, the assumptions made are validated. The bipolar  
6 membrane is the only responsible of contamination of sodium hydroxide solution  
7  
8 The contribution of formate migration through the bipolar membrane is obtained by  
9 comparing the flux of formate during time  $dt$  i.e.  $fi[HCOO^-]_a$  to the total flux through the  
10 membrane ( $i/F$ ). The value  $\theta$  of the transport number of formate ion is equal to:

$$\theta = fF[HCOO^-]_a = 0.006[HCOO^-]_a \quad (19)$$

16 The highest value corresponds to the beginning of the operation generally at  $2 \text{ mol dm}^{-3}$ . Thus  
17 the maximum value for transport number of formate ion through the bipolar membrane is near  
18 1 %. This is in agreement with the known results [8].  
19  
20  
21  
22

### 23 **3.2.4 Diffusion of formic acid from acid/salt solutions through bipolar membrane**

24 Diffusion through the bipolar membrane for mixtures of formic acid and sodium formate was  
25 measured. The total concentration of formate (formic acid or formate ion forms) was fixed to  
26  $2 \text{ mol dm}^{-3}$ . The receiving phase was sodium hydroxide solution  $1 \text{ mol dm}^{-3}$ . Fig. 5 reports the  
27 variations of formate flux through the bipolar membrane vs. the concentration of formic acid.  
28 At concentration of acid equal to 0 diffusion of  $2 \text{ mol dm}^{-3}$  formate ion solution is observed.  
29 The flux of diffusion increases as the acid concentration increases. Deviation from linearity is  
30 observed. Diffusion of formate ion is decreasing from its initial value to zero for the  $2 \text{ mol}$   
31  $\text{dm}^{-3}$  formic acid solution. This means that the mixture does not behave ideally. But the  
32 deviation is small and may be neglected in a first step.  
33  
34

35 The diffusion flux of formic acid is then nearly proportional to the acid concentration. The  
36 diffusion of formate ion does not occur when the current is switched on as seen before.  
37  
38  
39  
40  
41  
42  
43  
44

### 45 **3.2.5. Fitting of variations of acid, base and salt**

46 The experimental variations of concentrations of formic acid, sodium formate and sodium  
47 hydroxide are confronted to the curves determined by the model. Fig. 6 reports an example of  
48 results. The agreement is remarkable. The current efficiencies for production of acid and base  
49 and for consumption of sodium formate may be predicted by the model. The average current  
50 efficiency between time 0 and time  $t$  (as defined by equation 1) decreases with time. This is  
51 due in part to diffusion of molecular acid through the bipolar membrane which increases  
52 when the acid concentration increases. The major factor that decreases the current efficiency  
53 is the leakage of hydroxide ion. During the experiment, the base concentration increases and  
54  
55  
56  
57  
58  
59  
60  
61  
62  
63  
64  
65

1  
2  
3  
4 consequently the leakage. This explains the variations of current efficiency during the  
5 experiment. Fig. 7 reports the variations of current efficiency during an experiment of  
6 electro dialysis. The error on current efficiency is estimated to 3%. Experimental points are in  
7 accordance with calculated values. This is in favour of the assumption of proportionality of  
8 leakage flux of hydroxide ion to the concentration of sodium hydroxide. The current density  
9 has only a little effect on variations of current efficiency. To obtain high current efficiency,  
10 one has to limit the concentration of sodium hydroxide. Only a slight decrease should be  
11 obtained if this concentration is maintained constant. An increase of the volume of sodium  
12 hydroxide solution is favourable as could be seen in Table 1 which gives calculated current  
13 efficiencies versus the specific initial volume of sodium hydroxide solution.  
14  
15  
16  
17  
18  
19  
20  
21  
22

#### 23 **4. Conclusion**

24 The two-compartment configuration with a cation-exchange membrane is widely used in the  
25 acidification of organic salts. This is because it is simpler and more favourable in term of  
26 energy consumption than the three-compartment configuration.  
27

28 The contamination of sodium hydroxide solution by formate is due to:

- 29 - diffusion of molecular formic acid through the bipolar membrane
- 30 - leakage (migration) of formate ion through the bipolar membrane

31 The cation-exchange membrane is not concerned as far as contamination is considered.

32 The contribution of diffusion of formic acid and leakage of formate ion through the bipolar  
33 membrane to current efficiency is small. The current efficiency is principally defined by the  
34 leakage of hydroxide ion through cation-exchange membrane. During the electro dialysis, the  
35 current efficiency decreases as time increases. This may be explained by the increase of  
36 sodium hydroxide concentration, which means an increase of leakage of hydroxide ion.  
37  
38  
39  
40  
41  
42  
43  
44

45 The leakage of formate ion through the bipolar membrane is proportional to current density  
46 and to sodium hydroxide concentration. The values of flux rate of leakage of formate ion are  
47 given in Table 2, which recapitulates all the flux rates of interest in modelling of a two-  
48 compartment bipolar membrane electro dialysis of sodium formate. Note that the flux of  
49 leakage of formate is not to consider for the three-compartment configuration because the  
50 formate in the acid compartment is under acid form and the formate ion concentration is very  
51 small [12].  
52  
53  
54  
55  
56

57 To maintain a high current efficiency, the sodium hydroxide concentration should be low but  
58 an optimal value must be used since too low concentration of sodium hydroxide will be  
59 energetically unfavourable.  
60  
61  
62  
63  
64  
65

## References

1. H. Strathmann, Ion-exchange membrane separation processes, Elsevier, Amsterdam (2004)
2. S. Thate, G. Eigenberger, H.J. Rapp, Handbook on bipolar membrane technology, A.J.B. Kemperman, Twente University Press, Enschede, The Netherlands (2000)
3. C. Huang, T. Xu, Y. Zhang, Y. Xue, G. Chen, Application of electrodialysis to the production of organic acids: State-of-the-art and recent developments, *J. Membrane Sc.e* 288 (2007) 1–12
4. X. Tongwen, Electrodialysis processes with bipolar membranes (EDBM) in environmental protection—a review, *Resources, Conservation and Recycling*, 37, (2002) 1-22
5. J.S. Jaime Ferrer, E. Couallier, Ph. Viers, G. Durand, M. Rakib, Three-compartment bipolar membrane electrodialysis for splitting of sodium formate into formic acid and sodium hydroxide: role of diffusion of molecular acid, *J. Membrane Sc.*(2008), doi:10.1016/j.memsci.2008.07.059
6. Y.H. Kim, S.H. Moon, Lactic acid recovery from fermentation broth using one stage electrodialysis, *J. Chem. Tech. Biotech.* 76 (2001) 169-178
7. G.S. Trivedi, B.G Shah, S.K. Adhikary, V.K. Indusekhar, R. Rangarajan, Studies on bipolar membranes. Part II – Conversion of sodium acetate to acetic acid and sodium hydroxide, *Reactive Func. Polymers* 32 (1997) 209-215
8. F. G. Wilhelm, I. Pünt, N.F.A. van der Vegt, M. Wessling, H. Strathmann, Optimisation strategies for the preparation of bipolar membranes with reduced salt ion leakage in acid-base electrodialysis, *J. Membrane Sc.* 182 (2001) 13-28
9. S. Koter, Modeling of weak acid production by the EDB method, *Sep.Purif. Tech.* 57 (2007) 406–412
10. J.S. Jaime Ferrer, S. Laborie, G. Durand, M. Rakib, Formic acid regeneration by electromembrane processes, *J. Membrane. Sc.*, 280 (2006) 509-516
11. J.L. Gineste, G. Pourcelly, Y. Lorrain, F. Persin, C. Gavach, Analysis of factors limiting the use of bipolar membranes: a simplified model to determine trends, *J. Membrane. Sc.* 112 (1996) 199-208

- 1  
2  
3  
4 12. J.S. Jaime Ferrer, E. Couallier, M. Rakib, G. Durand, Electrochemical determination  
5 of acidity level and dissociation of formic acid/water mixtures as solvent, *Electrochim.*  
6 *Acta*, 52 (2007) 5773-5780  
7  
8  
9  
10  
11  
12  
13  
14  
15  
16  
17  
18  
19  
20  
21  
22  
23  
24  
25  
26  
27  
28  
29  
30  
31  
32  
33  
34  
35  
36  
37  
38  
39  
40  
41  
42  
43  
44  
45  
46  
47  
48  
49  
50  
51  
52  
53  
54  
55  
56  
57  
58  
59  
60  
61  
62  
63  
64  
65

1  
2  
3  
4 Fig. 1: Two-compartment BMED principle and the fluxes through the membranes (dashed  
5 arrows: undesirable flux, continuous arrows: desirable flux)  
6  
7

8  
9 Fig. 2: Volume variations for the acid circuit (negative values) and for the base circuit  
10 (positive values) vs. current quantity for current densities 2.5-5-7.5-10 A dm<sup>-2</sup>  
11  
12

13  
14 Fig. 3: Formic acid contamination by sodium ion in the three-compartment experiment, base  
15 and salt solutions renewed (average concentration of base 2 mol dm<sup>-3</sup>,  $i = 5.00 \text{ A dm}^{-2}$ ,  $T =$   
16 303 K)  
17  
18

19  
20  
21 Fig. 4: Specific formate mol number crossing the membrane vs. time,  $T = 300 \text{ K}$

22  
23 initial specific volume of salt (base) 0.14 dm (0.08 dm), concentration of salt (base) 1.84  
24 mol dm<sup>-3</sup> (0.90 mol dm<sup>-3</sup>),  $i = 9.95 \text{ A dm}^{-2}$ ;  $\diamond$  initial volume of salt (base) 0.14 dm (0.09 dm);  
25 concentration of salt (base) 1.87 mol dm<sup>-3</sup> (0.85 mol dm<sup>-3</sup>),  $i = 7.50 \text{ A dm}^{-2}$ ;  $\Delta$  initial volume  
26 of salt (base) 0.16 dm (0.12 dm); concentration of salt (base) 1.81 mol dm<sup>-3</sup> (0.97 mol dm<sup>-3</sup>),  $i$   
27 = 5.00 A dm<sup>-2</sup>;  $\blacksquare$  initial volume of salt (base) 0.16 dm (0.09 dm); concentration of salt (base)  
28 1.84 mol dm<sup>-3</sup> (0.86 mol dm<sup>-3</sup>),  $i = 2.50 \text{ A dm}^{-2}$   
29  
30  
31

32  
33 Fig. 5: Diffusion from acid/salt mixtures through BP1 membrane ( $[\text{HCOOH}] + [\text{NaHCOO}] =$   
34 2 mol dm<sup>-3</sup>,  $T = 298 \text{ K}$ )  
35  
36

37  
38 Fig. 6: Mass balance of major products in BMED vs. time,  $\blacksquare$  formic acid,  $\diamond$  sodium formate,  
39  $\Delta$  sodium hydroxide  
40  
41

42  
43  
44  
45 Fig. 7: Average current efficiency vs. time, experimental points and fitted curve. Initial  
46 specific volume of salt (base) 0.14 dm (0.08 dm), concentration of salt (base) 1.84 mol dm<sup>-3</sup>  
47 (0.90 mol dm<sup>-3</sup>),  $T = 300\text{K}$ ,  $i = 9.95 \text{ A dm}^{-2}$   
48  
49  
50  
51  
52  
53  
54  
55  
56  
57  
58  
59  
60  
61  
62  
63  
64  
65



1  
2  
3  
4 Lit of tables  
5  
6  
7  
8

9 Table 1: Current efficiency vs. specific initial volume of sodium hydroxide solution, specific  
10 initial volume of salt 0.14 dm, concentration of salt (base)  $1.84 \text{ mol dm}^{-3}$  ( $0.90 \text{ mol dm}^{-3}$ ),  $T =$   
11  $300 \text{ K}$ ,  $i = 9.95 \text{ A dm}^{-2}$   
12  
13  
14

15  
16  
17  
18  
19 Table 2: Values of flux rates of different transfers occurring in the two-compartment  
20 configuration during bipolar membrane electro dialysis of sodium formate.  
21  
22

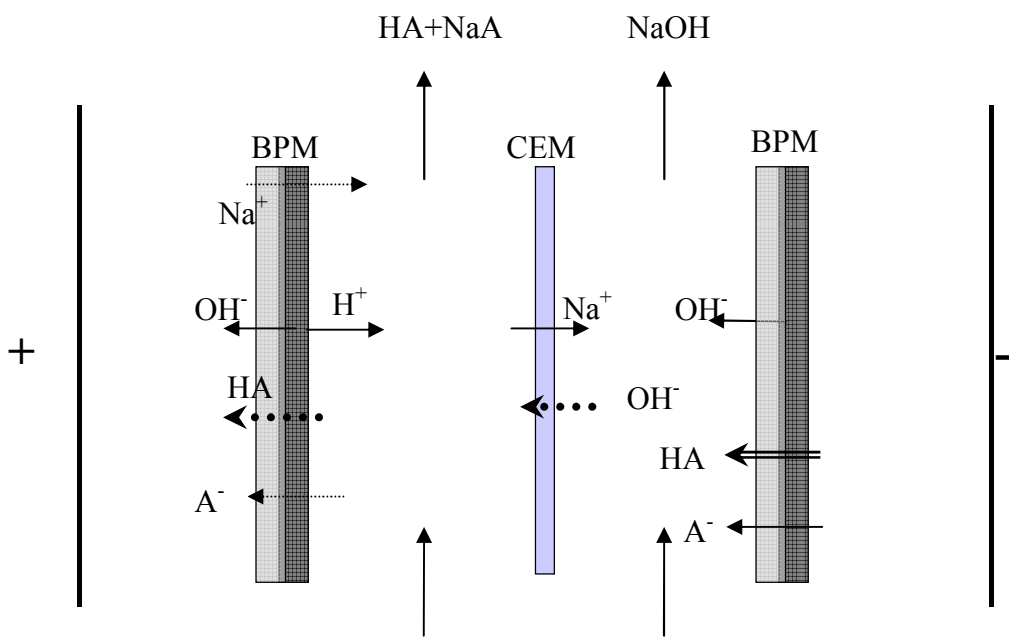


Fig. 1

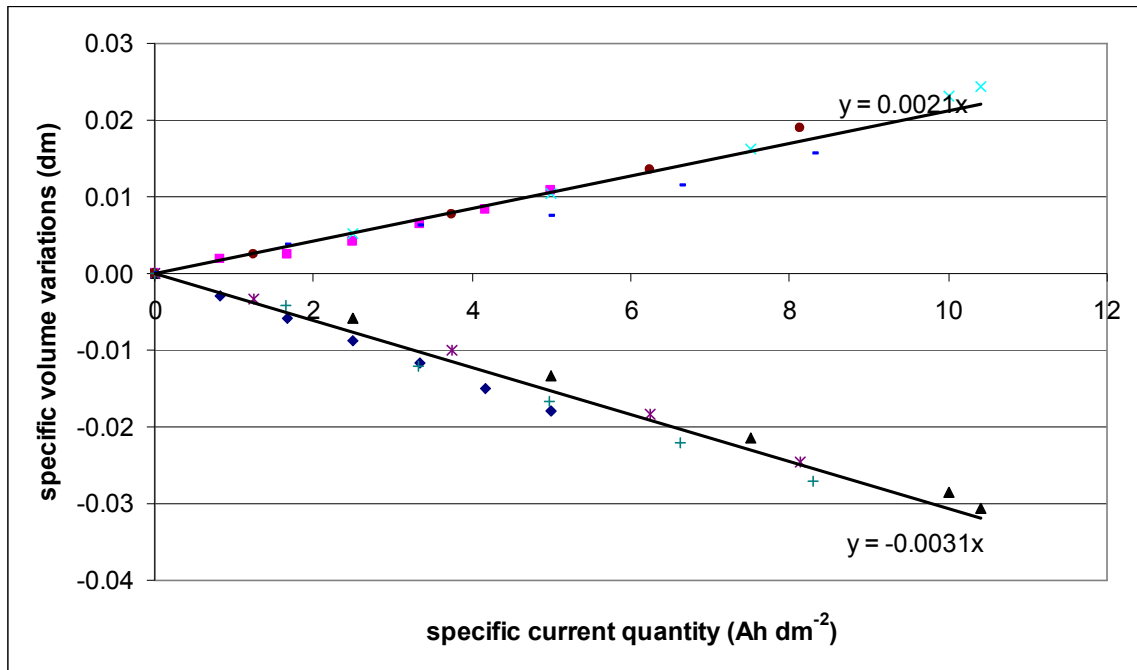


Fig.2

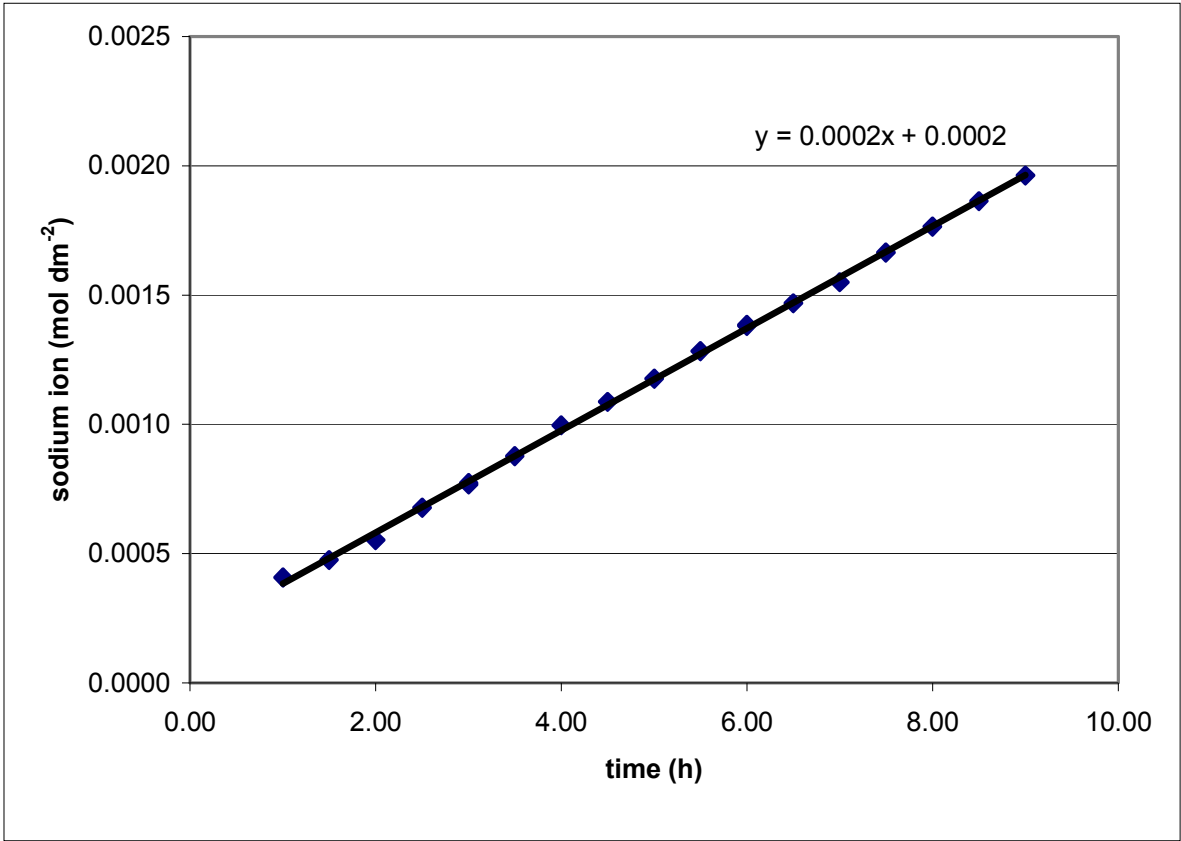


Fig. 3

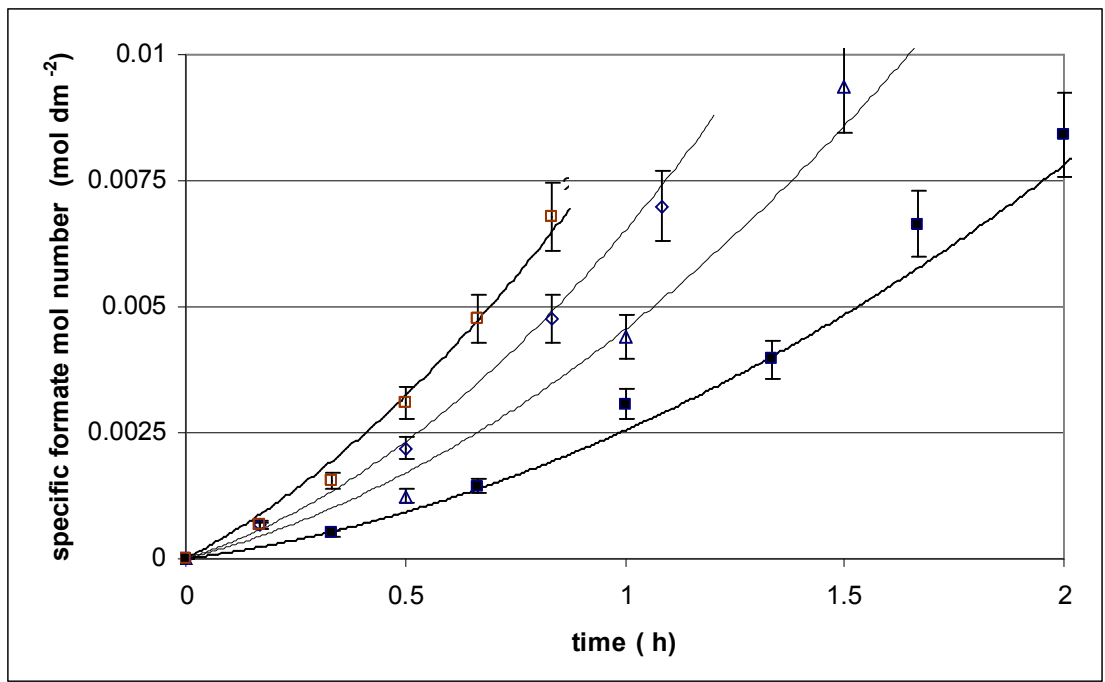


Fig. 4

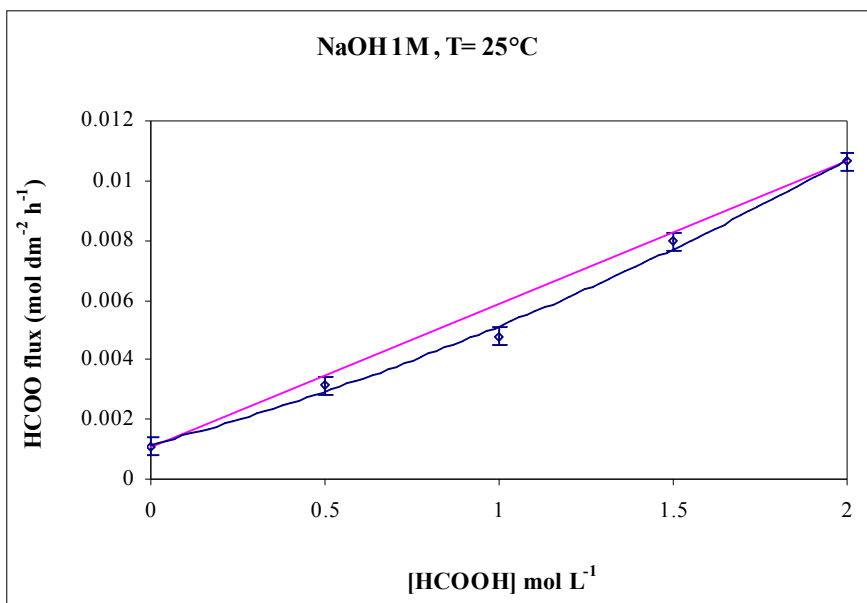


Fig. 5:

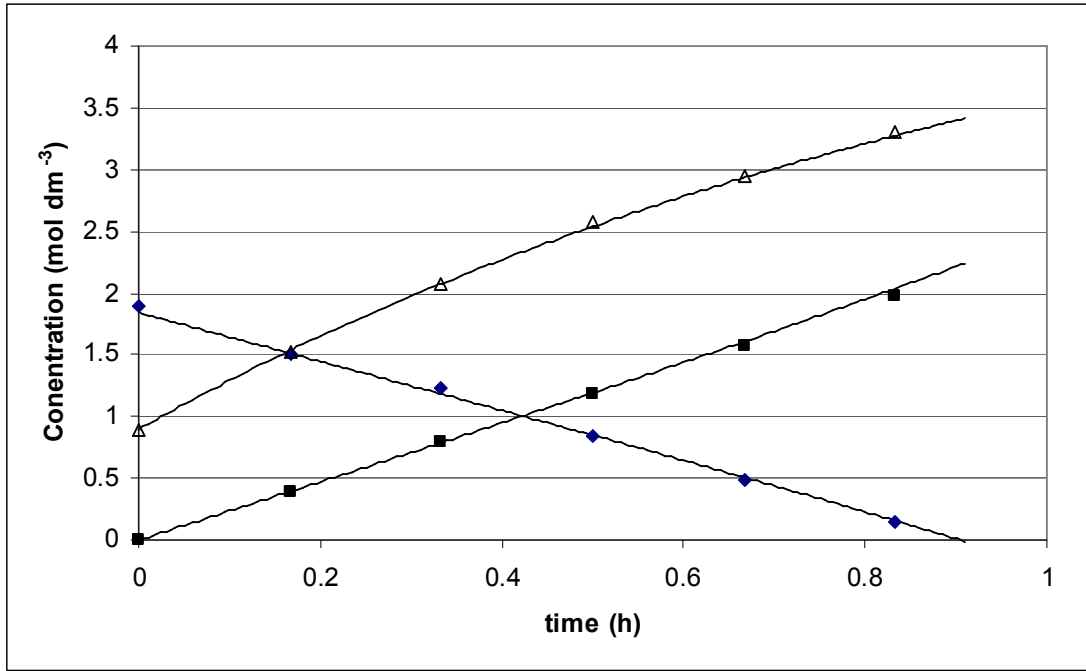


Fig. 6

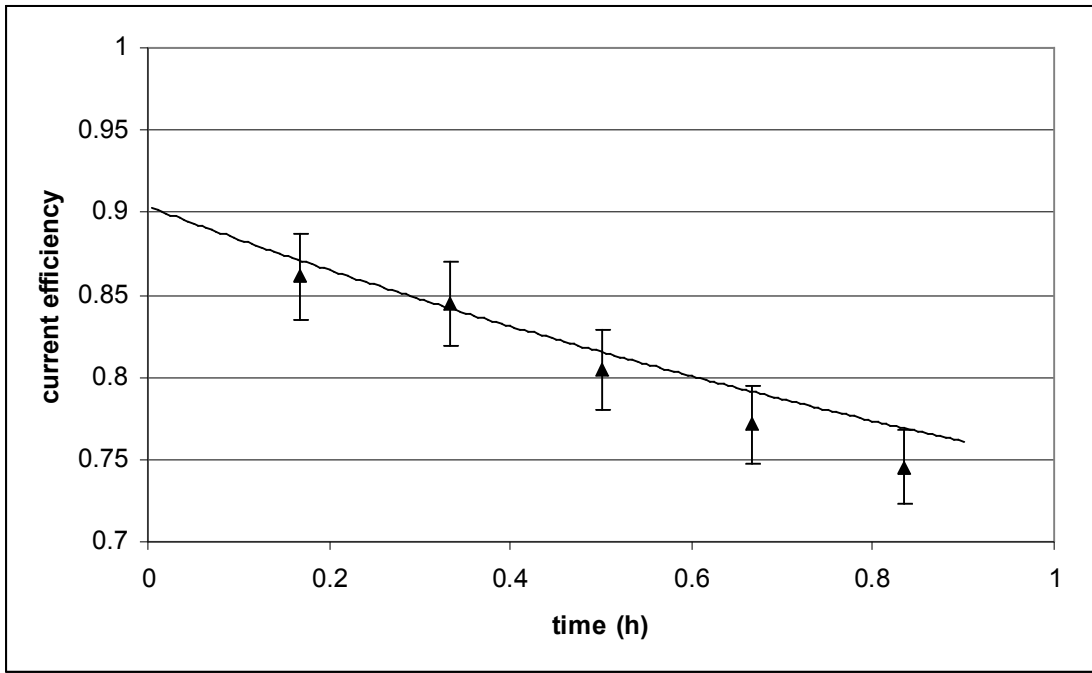


Fig. 7:



Table 1:

Specific volume of sodium hydroxide solution (dm)	Current efficiency
0.1	0.79
0.2	0.84
0.5	0.87

Table 2:

Flux rates	Values	Study
Diffusion of molecular formic acid through the bipolar membrane	4.5 to 5.0 $10^{-3}$ dm h <sup>-1</sup> at 298 K*	Three-compartment electro dialysis [5]
Hydroxide ion leakage through the cation-exchange membrane	3,2 $10^{-3}$ dm <sup>3</sup> Ah <sup>-1</sup> at 298K**	Three-compartment electro dialysis [5]
Formate ion leakage through the bipolar membrane	2,2 $10^{-4}$ dm <sup>3</sup> Ah <sup>-1</sup> at 300 K	This study
Sodium ion leakage through the bipolar membrane	2 $10^{-5}$ dm <sup>3</sup> Ah <sup>-1</sup> at 298K	Three-compartment electro dialysis [5] and this study
Volume variations of acid/salt compartment	3.1 $10^{-3}$ dm <sup>3</sup> Ah <sup>-1</sup>	This study
Volume variations of base compartment	2.1 $10^{-3}$ dm <sup>3</sup> Ah <sup>-1</sup>	This study

\*Activation energy: 18 kJ mol<sup>-1</sup>

\*\*Activation energy: 23 kJ mol<sup>-1</sup>