



**HAL**  
open science

# An efficient interpolation for calculation of the response of composite layered material and its implementation in MUSIC imaging

Giacomo Rodeghiero, Yu Zhong, Dominique Lesselier, Marc Lambert, Xudong Chen

► **To cite this version:**

Giacomo Rodeghiero, Yu Zhong, Dominique Lesselier, Marc Lambert, Xudong Chen. An efficient interpolation for calculation of the response of composite layered material and its implementation in MUSIC imaging. 19th Conference on the Computation of Electromagnetic Fields (COMPUMAG 2013), Jun 2013, Budapest, Hungary. pp.PC5-11. hal-00925728

**HAL Id: hal-00925728**

**<https://hal-centralesupelec.archives-ouvertes.fr/hal-00925728>**

Submitted on 25 Feb 2015

**HAL** is a multi-disciplinary open access archive for the deposit and dissemination of scientific research documents, whether they are published or not. The documents may come from teaching and research institutions in France or abroad, or from public or private research centers.

L'archive ouverte pluridisciplinaire **HAL**, est destinée au dépôt et à la diffusion de documents scientifiques de niveau recherche, publiés ou non, émanant des établissements d'enseignement et de recherche français ou étrangers, des laboratoires publics ou privés.

G. Rodeghiero<sup>1</sup> Y. Zhong<sup>2</sup> M. Lambert<sup>1</sup> D. Lesselier<sup>1</sup> X. Chen<sup>2</sup><sup>1</sup>Département de Recherche en Électromagnétisme, Laboratoire des Signaux et Systèmes UMR8506 (CNRS-SUPELEC-Univ Paris-Sud)<sup>2</sup>Department of Electrical and Computer Engineering, National University of Singapore

## Research context

## Main institutions involved

- Département de Recherche en Électromagnétisme, Laboratoire des Signaux et Systèmes UMR8506
- Department of Electrical and Computer Engineering, National University of Singapore



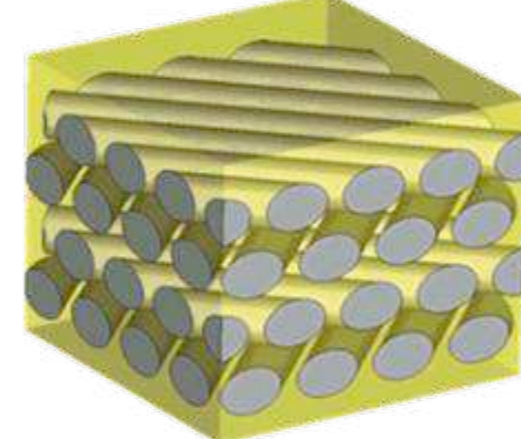
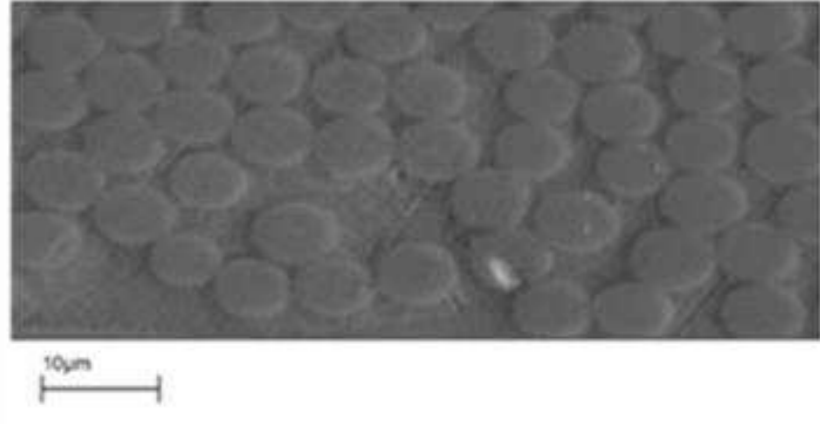
## Main financial support

- Bilateral Merlion Project (2011–2012), projet N° 8.14.10 "Fast 3-D electromagnetic imaging of anisotropic media and non-destructive evaluation"
- DIGITEO : PhD Scholarship jointly involving L2S and CEA-LIST (Département Imagerie et Simulation pour le Contrôle)
- Univ Paris-Sud : invited assistant-professor
- Internal ressources (DRÉ & NUS)



## To build

- Accurate computational models of complex anisotropic multi-layer composite panels
- Robust, fast, end-user's friendly imaging procedures

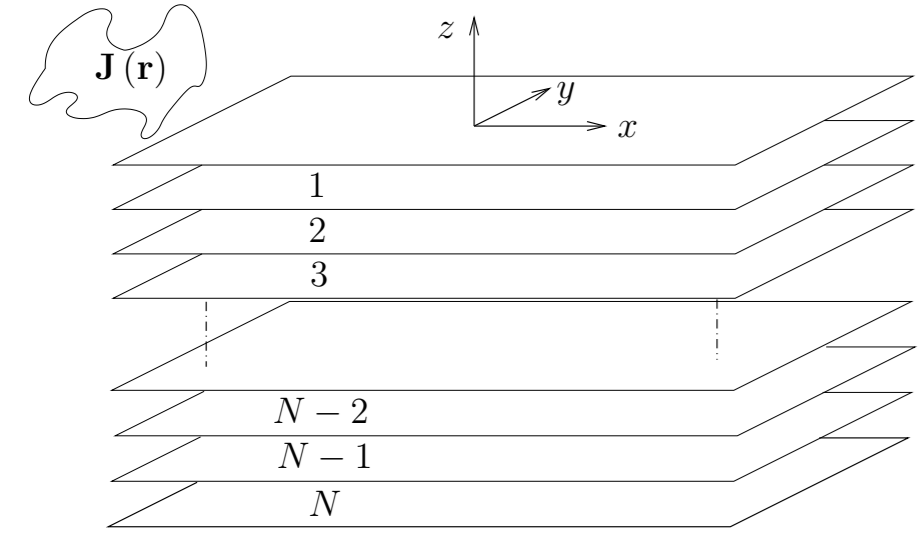


## NdT-E from eddy-currents to microwaves in aeronautics and automotive industries



## Electromagnetic modeling and preliminary numerical results

## Undamaged structure

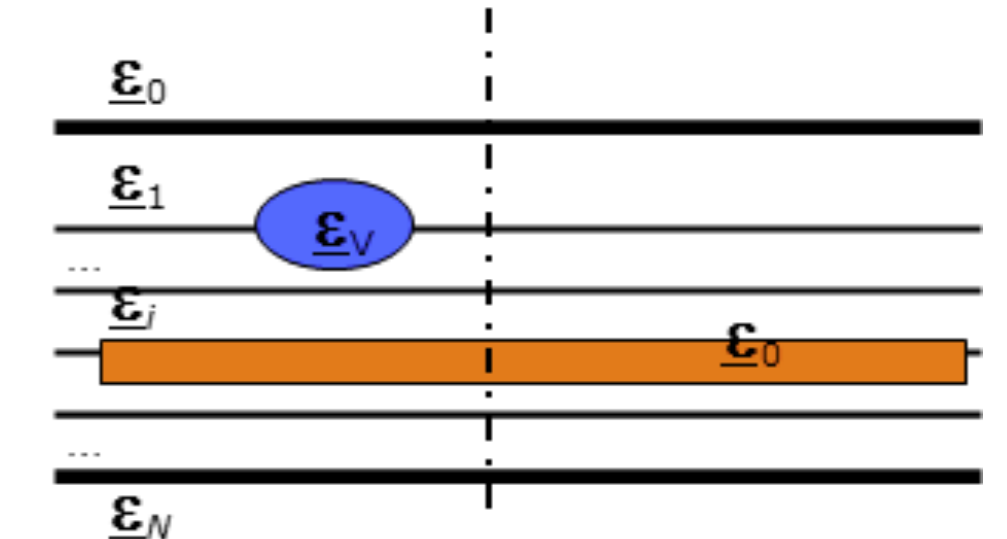


- Each layer: homogeneous *anisotropic* (different e.m. properties from layer to next)
- Uniaxial dielectric (glass-based) or conductive (graphite-based) effective media *large-scale hypothesis*
- *Diagonal* tensor in eigenframes along and orthogonal to fibers' axes
- *Dyadic Green* function in need as well as response to known distributed electric source anywhere in the structure

$$\bar{\epsilon}(\vec{r}) = \text{diag}[\epsilon_{n,11}; \epsilon_{n,22}(\vec{r}); \epsilon_{n,22}(\vec{r})] \text{ in local coordinate system}$$

## Damaged structure

- E.M. parameters differ from background stratified panel within layers or at interfaces
- 3-D volumetric defects (voids, fluid-filled cavities, localized damaged zones, etc.), or delaminations (thin, air-type slabs)
- Method of Moments upon vector contrast-source integral formulations, or change of dyads via supplementary reflection/transmission



## Constructing the spectral and spatial response of the laminate (forward modeling)

New recurrence relations based on the propagator matrix method [8]

- To efficiently calculate the spectral response of the laminate
- Capable of stably dealing with distributed source along  $z$
- More efficient compared to the traditional Green's function method
- To numerically solve the state equation

$\frac{d}{dz}\vec{\psi}(z) = \bar{A}_n \cdot \vec{\psi}(z) + \vec{f}(z)$  with  $\vec{\psi}(z)$  containing the tangential components of the fields and  $\vec{f}(z)$  being the source term

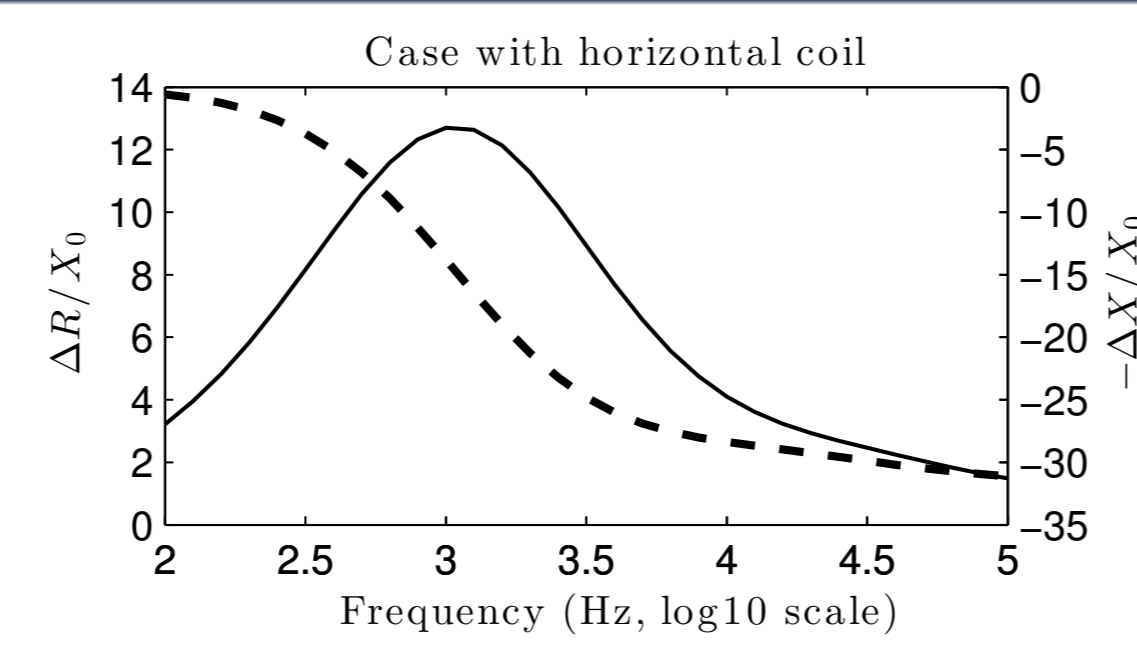


Figure : Reproduction of the results found in [2]

Fast algorithm to calculate the spatial response of the laminate [7]

- To efficiently calculate the spatial response on the rectilinear mesh
- No inverse Fourier transform involved
- Much faster than the inverse Fourier transform
- Incorporating the fast numerical interpolation and integration based on Padua points
- Especially useful when constructing the impedance matrix of the MoM

## Multiple Signal Classification (MUSIC) imaging with anisotropic layered media

## Interpolation and integration using the Padua points

- Alternative representation as self intersections and boundary contacts of the generating curve
- $\gamma(t) = (-\cos((n+1)t), -\cos(nt), t \in [0, \pi])$

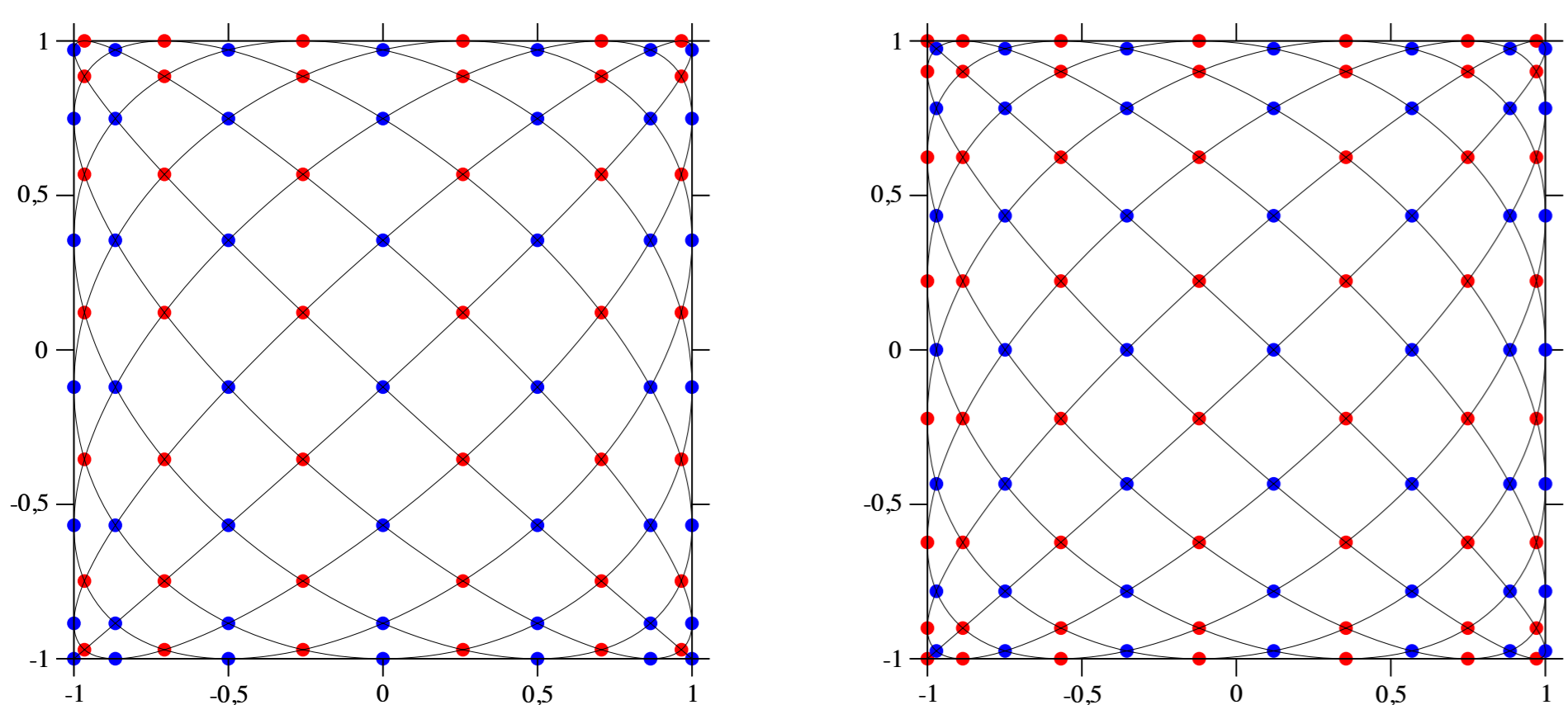


Figure : The Padua points with their generating curve for  $n = 12$  (left, 91 points) and  $n = 13$  (right, 105 points), also as union of two Chebyshev-Lobatto sub-grids (red and blue bullets). Image taken from [3].

## Dealing with fast oscillating integrals

- Goal is to compute the I-FT of fast oscillating spectrum in the  $k_x - k_y$  plane

$$G(x, y) = \frac{1}{4\pi^2} \iint_{-\infty}^{\infty} \tilde{G}_0(k_x, k_y) e^{i(k_x x + k_y y)} dk_x dk_y \quad (1)$$

- Interpolation of the non-oscillating part at the Padua points with Chebyshev's polynomial interpolant

$$\mathcal{L}_n \tilde{G}_0(k_x, k_y) = \sum_{k=0}^n \sum_{j=0}^k c_{j, k-j} \hat{T}_j(k_x) \hat{T}_{k-j}(k_y) - \frac{1}{2} c_{n,0} \hat{T}_n(k_x) T_0(k_y) \quad (2)$$

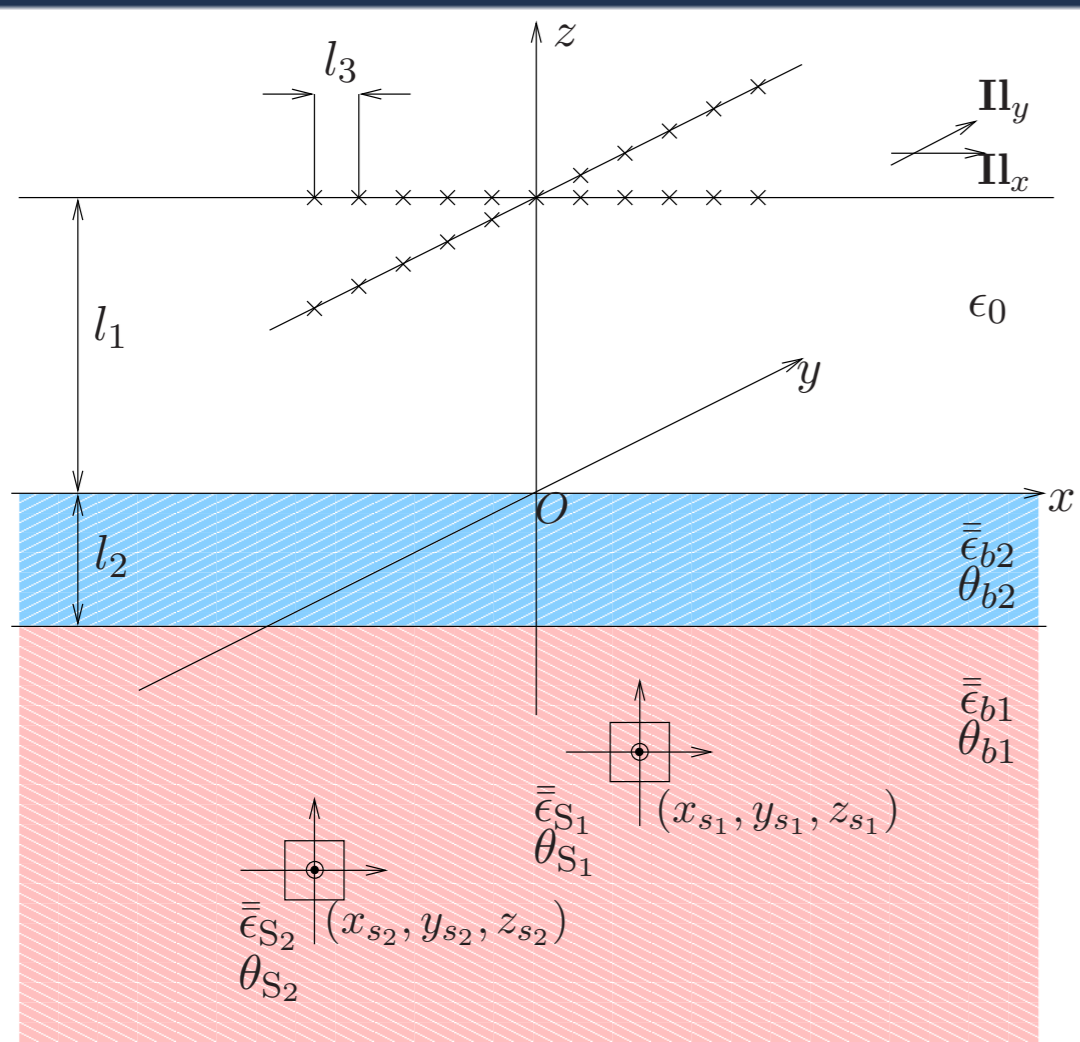
- with weights  $c_{j, k-j}$  computed using [4]

- Fourier transform of Chebyshev polynomials given by

$$\int_{-1}^1 \hat{T}_n(k_x) \exp(-ik_x x) dk_x \quad (3)$$

- are managed using [6] among other good options.

## MUSIC images of anisotropic layered media affected by two defects



- Standard MUSIC imaging method [1]

$$\phi(\vec{r}) = \frac{1}{\sum_{\sigma_j < \sigma_L} \sum_{v=1}^3 |\vec{u}_j^* \cdot \vec{G}_v(\vec{r})|^2}$$

- Enhanced MUSIC imaging method [5]

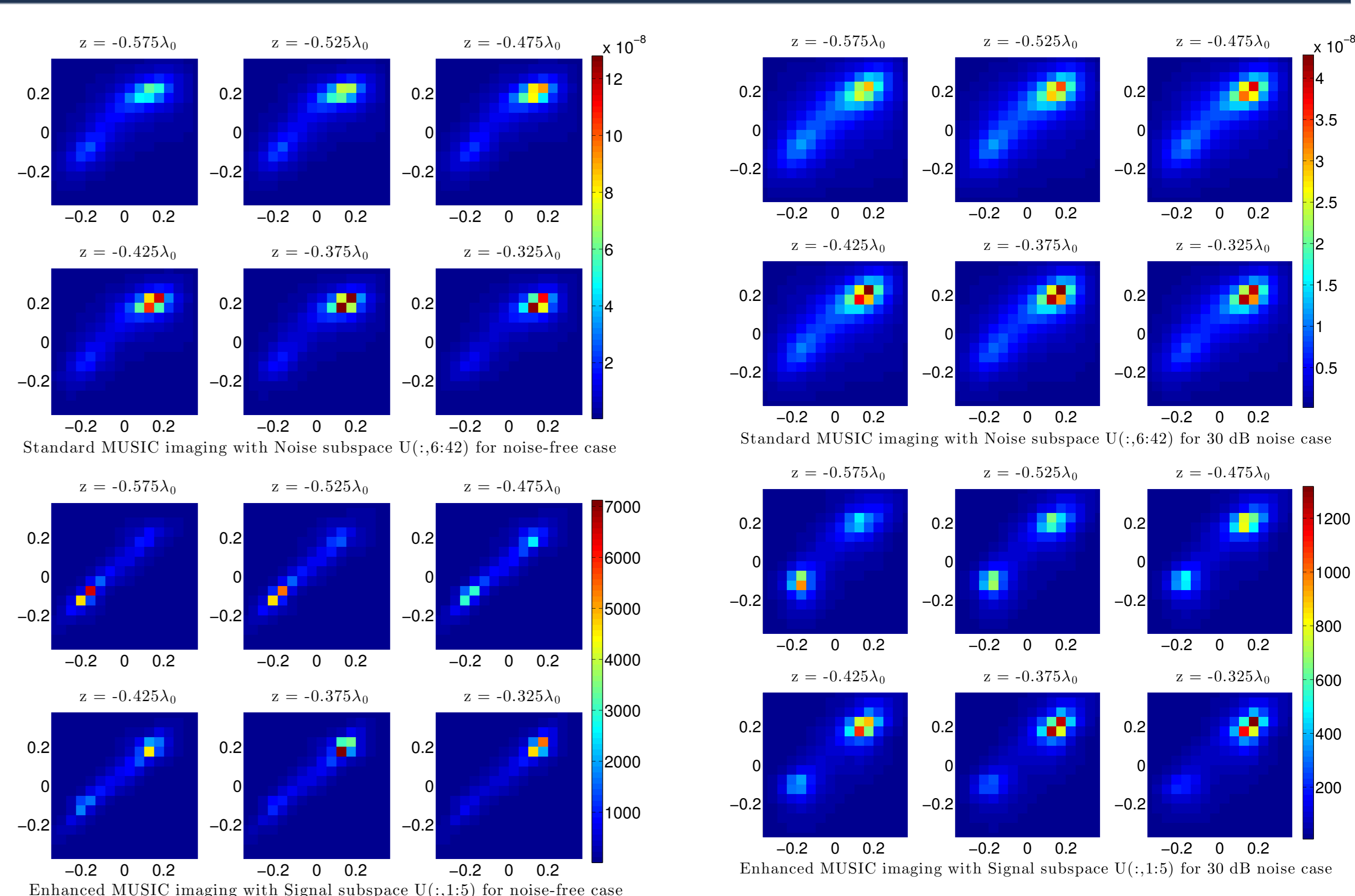
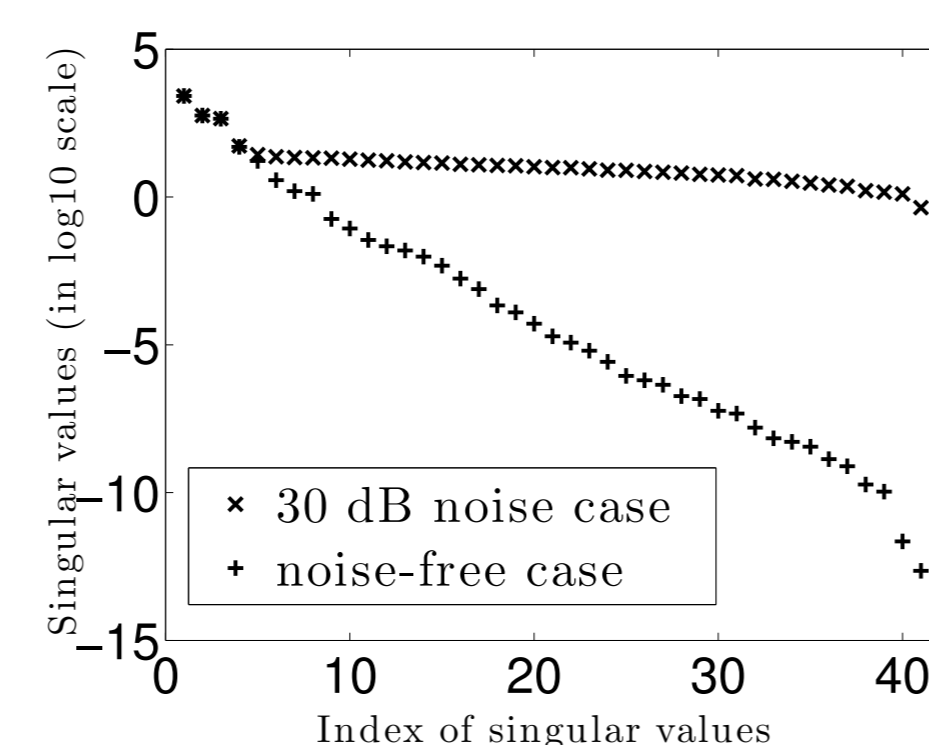
$$\phi(\vec{r}) = \frac{1}{1 - \sum_{\sigma_j > \sigma_L} |\vec{u}_j^* \cdot \vec{G}(\vec{r}) \cdot \vec{a}_{\text{test}}|^2}$$

with

$$\vec{a}_{\text{test}} = \arg \max_{\vec{a}} \frac{\sum_{\sigma_j > \sigma_L} |\vec{u}_j^* \cdot \vec{G}(\vec{r}) \cdot \vec{a}|^2}{|\vec{G}(\vec{r}) \cdot \vec{a}|^2}$$

- A cross type antenna array with 5 antennas on each arm.
- Each antenna as transceivers with  $x$  and  $y$  polarizations.
- Two small inclusions with dimension of  $0.1\lambda_0 \times 0.1\lambda_0 \times 0.1\lambda_0$ .

$$\begin{aligned} \bar{\epsilon}_{b1} &= \text{diag}[4.5 + i0.2, 6 + i0.05, 6 + i0.05]; \theta_{b1} = 45^\circ \\ \bar{\epsilon}_{b2} &= \text{diag}[2 + i0.3, 3 + i0.1, 3 + i0.1]; \theta_{b2} = 60^\circ \\ \bar{\epsilon}_{s1} &= \bar{\epsilon}_0 \quad \theta_{s1} = 0^\circ \quad \theta_{s2} = 120^\circ \\ \bar{\epsilon}_{s2} &= \text{diag}[4.5 + i0.2, 6 + i0.05, 6 + i0.05] \quad l_1 = 0.5\lambda_0 \\ (x_{s2}, y_{s2}, z_{s2}) &= (-0.2\lambda_0, -0.1\lambda_0, -0.55\lambda_0) \quad l_2 = 0.2\lambda_0 \\ (x_{s1}, y_{s1}, z_{s1}) &= (0.15\lambda_0, 0.2\lambda_0, -0.35\lambda_0) \quad l_3 = 0.2\lambda_0 \end{aligned}$$



## Conclusions &amp; perspectives

- Numerical integration method based on Padua points is proposed to avoid directly interpolating on the fast oscillating function.
- The approach is validated by comparison with configurations found in the literature

- Green's function constructed by the proposed method is applied in MUSIC imaging.
- Preliminary numerical results show the efficiency of the proposed method in a fully complex anisotropic configuration

[1] H. Ammari, E. Iakovleva, D. Lesselier, and G. Perrusson (2007). *SIAM J. Sci. Comput.* **29** 2 pp. 674–709.[2] S. K. Burke (1990). *J. Appl. Phys.* **68** 7 pp. 3080–3090.[3] M. Caliani, S. De Marchi, A. Sommariva, and M. Vianello (2008). *5th European Congress of Mathematics - Amsterdam July 14-18.*[4] M. Caliani, S. De Marchi, A. Sommariva, and M. Vianello (2011). *Numerical Algorithms* **56** pp. 45–60.[5] X. Chen and Y. Zhong (2009). *Inverse Problems* **25** 1 p. 015008.[6] V. Dominguez, I. G. Graham, and V. P. Smyshlyayev (2011). *IMA Journal of Numerical Analysis* **31** pp. 1253–1280.[7] Y. Zhong, P. Ding, M. Lambert, D. Lesselier, and X. Chen (2013). *IEEE T. Antennas Propagat.* **in preparation.**[8] Y. Zhong, M. Lambert, D. Lesselier, and X. Chen (2013). *IEEE T. Antennas Propagat.* **revised.**