



HAL
open science

Fault Detection in Nuclear Power Plants Components by a Combination of Statistical Methods

Francesco Di Maio, Piero Baraldi, Enrico Zio, Rédouane Seraoui

► **To cite this version:**

Francesco Di Maio, Piero Baraldi, Enrico Zio, Rédouane Seraoui. Fault Detection in Nuclear Power Plants Components by a Combination of Statistical Methods. *IEEE Transactions on Reliability*, 2013, 62 (4), pp.833 - 845. 10.1109/TR.2013.2285033 . hal-00934649

HAL Id: hal-00934649

<https://hal-centralesupelec.archives-ouvertes.fr/hal-00934649>

Submitted on 22 Jan 2014

HAL is a multi-disciplinary open access archive for the deposit and dissemination of scientific research documents, whether they are published or not. The documents may come from teaching and research institutions in France or abroad, or from public or private research centers.

L'archive ouverte pluridisciplinaire **HAL**, est destinée au dépôt et à la diffusion de documents scientifiques de niveau recherche, publiés ou non, émanant des établissements d'enseignement et de recherche français ou étrangers, des laboratoires publics ou privés.

FAULT DETECTION IN NUCLEAR POWER PLANTS COMPONENTS BY A COMBINATION OF STATISTICAL METHODS

Francesco Di Maio^{a*}, member IEEE, Piero Baraldi^a, Enrico Zio^{a,b}, senior member IEEE, Redouane Seraoui^c

^aEnergy Department, Politecnico di Milano, via Ponzio 34/3, Milano, Italy

^bChair on System Science and the Energetic Challenge, European Foundation for New Energy – Electricite de France, Ecole Centrale, Paris and Supélec, Paris, France

^cEdF R&D\STEP Simulation et Traitement de l'information pour l'exploitation des systèmes de production, Chatou Cedex, France

Abstract – In this paper, we investigate the feasibility of a strategy of fault detection capable of controlling misclassification probabilities, i.e., balancing false and missed alarms. The novelty of the proposed strategy consists of i) a signal grouping technique and signal reconstruction modeling technique (one model for each subgroup), and ii) a statistical method for defining the fault alarm level. We consider a real case study concerning 46 signals of the Reactor Coolant Pump (RCP) of a typical Pressurized Water Reactor (PWR). In the application, the reconstructions are provided by a set of Auto-Associative Kernel Regression (AAKR) models, whose input signals have been selected by a hybrid approach based on Correlation Analysis (CA) and Genetic Algorithm (GA) for the identification of the groups. Sequential Probability Ratio Test (SPRT) is used to define the alarm level for a given expected classification performance. A practical guideline is provided for optimally setting the SPRT parameters' values.

Index Terms – Condition monitoring, signal grouping, signal reconstruction, auto-associative kernel regression, sequential probability ratio test, nuclear reactor coolant pump.

* Corresponding author. E-mail: francesco.dimaio@polimi.it, Tel. +39 02 2399 6372, Fax. +39 02 2399 6309

Acronyms and Abbreviations

ac	Abnormal conditions
AAKR	Auto-Associative Kernel Regression
ANN	Artificial Neural Network
ASN	Average Sample Number
CA	Correlation Analysis
GA	Genetic Algorithm
ICA	Independent Component Analysis
nc	Normal conditions
NPP	Nuclear Power Plant
PCA	Principal Component Analysis
PWR	Pressurized Water Reactor
RCP	Reactor Coolant Pump
SPRT	Sequential Probability Ratio Test
SVM	Support Vector Machine

Notations

N	Number of signals
t_i	i -th measurement time
\bar{x}^{obs}	Observed measurements of N signals at time t_i
\hat{x}^{nc}	Reconstructions of \bar{x}^{obs} in normal conditions (nc)
\bar{r}	Residuals between \bar{x}^{obs} and \hat{x}^{nc}
r_i	Residual between the signal measurement and its reconstruction at time t_i
α	False alarm rate
β	Missed alarm rate
X_M	Number of historical patterns used to perform the hybrid signal grouping
X_V	Number of patterns belonging to the validation set
H_0	Null hypothesis of the SPRT test
H_1	Alternative hypothesis of the SPRT test
μ_0	Mean of the Gaussian distribution of H_0
σ^2	Variance of Gaussian distributions H_0 and H_1 , i.e., noise of \bar{x}^{obs}
μ_1	Mean of the Gaussian distribution of H_1
$\ln(A)$	Lower stopping boundary of the SPRT
$\ln(B)$	Upper stopping boundary of the SPRT
L_n	Likelihood ratio for the positive mean test
$\text{SPRT}=\ln(L_n)$	Logarithm of the the likelihood ratio L_n
R_n	Sequence of residuals values r_1, r_2, \dots, r_n
$P(r_1, r_2, \dots, r_n H_0)$	Probability that the null hypothesis H_0 given R_n
$P(r_1, r_2, \dots, r_n H_1)$	Probability of the alternative hypothesis H_1 given R_n
$E[n; \mu]$	Number of measurements, i.e., time, necessary for the SPRT to choose among H_0 and H_1
d	Outcome of Durbin–Watson test
x_{4a}^{obs}	Signal measurements of signal $4a$
\hat{x}_{4a}^{nc}	Signal reconstructions of signal $4a$
$Q(\mu_1)$	Operating characteristic function, i.e., the probability that H_0 is accepted for different values of μ_1
$P(\mu_1)$	Power function, i.e., the probability that H_1 is accepted, for different values of μ_1

1. Introduction

We present a research work aimed at developing a fault detection strategy with the capability of controlling fault misclassification probabilities, i.e., balancing false and missed alarms, for improving Nuclear Power Plants' (NPPs') availability and safety. The novelty of the fault detection strategy lies in the combination of a signal grouping technique, a signal reconstruction modeling technique, and a statistical method for determining the signal deviation level for fault alarms.

To set the problem, Fig. 1 shows a typical scheme of condition monitoring of a component for fault detection. Sensor measurements (signals) \bar{x}^{obs} are sent in input to a model which reconstructs in output the same signals \hat{x}^{nc} as if the component behaviour were in normal conditions (nc). Deviations between the actually measured (observed) signals \bar{x}^{obs} and the reconstructed ones \hat{x}^{nc} reveal the presence of faults [1]. In simple words, $\bar{x}^{obs} = \hat{x}^{nc}$ under normal conditions, whereas $\bar{x}^{obs} \neq \hat{x}^{nc}$ under abnormal conditions (ac).

Different empirical models have been developed for signal reconstruction. Typical examples include Artificial Neural Networks (ANNs) and Recurrent ANNs [2]-[9], Principal Component Analysis (PCA) and Independent Component Analysis (ICA) [10]-[12], Multivariate State Estimation Technique (MSET) [13]-[14], and Support Vector Machines (SVMs) [15]-[16]. The model considered in this work for reconstructing the component behavior in normal conditions is based on the Auto-Associative Kernel Regression (AAKR) method [17]-[20].

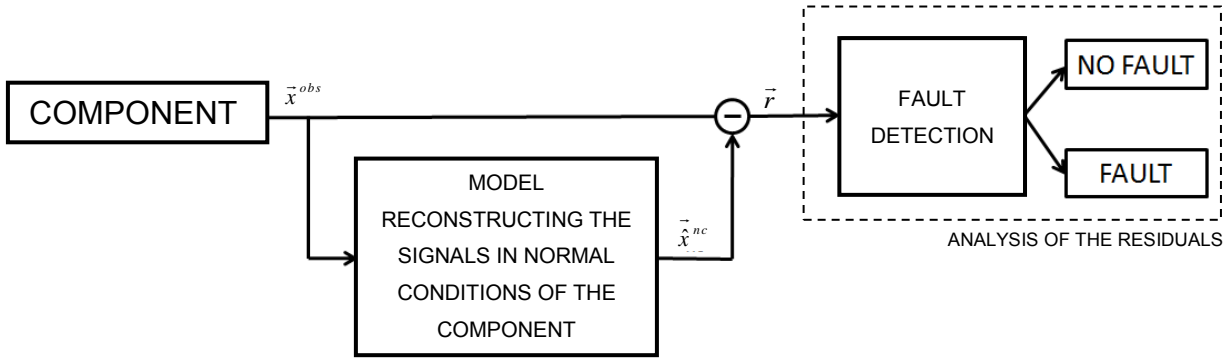


Fig. 1. Condition monitoring scheme for fault detection.

In practice, when a large number of signals is available, a phenomenon called fault propagation effect may occur when reconstructing the component behavior in normal conditions; if one or more signals are degraded by the fault, they may affect the values of other signals, and therefore these latter signals may be incorrectly reconstructed, resulting in a large number of false alarms [21].

To alleviate this problem, one can resort to grouping signals into subgroups, and developing a reconstruction model for each subgroup [21]. Two different types of grouping strategies have been proposed in literature: with overlapping, i.e., the same signal can belong to more than one group [12], [22]-[25], and without overlapping [26]-[28]. In practical applications, the latter strategy tends to be preferred because it allows for a smaller number of models to be developed, at a lower computational effort [28]. Two different approaches to grouping can be implemented: filter, and wrapper. The former bases the grouping on characteristics a

priori judged to be favorable for condition monitoring, e.g., physical and functional homogeneity (i.e., groups are made only by temperature signals, or only by pressure signals), irrespective of the signal reconstruction modeling technique used [24], [27]. The latter uses a search algorithm, e.g., Genetic Algorithms (GAs) [29], Differential Evolution [30], etc., as a wrapper around the signal reconstruction model [31]. In this paper, we use a hybrid approach, i.e., filter and wrapper, based on non-overlapping grouping given by Correlation Analysis (CA) and GA [29] (Fig. 2, bottom left). The motivation of the choice is that the GA-based wrapper approach allows finding better performing groups for the specific reconstruction model used, while the contribution of CA leverages the computational burden of the GA (for further details, the interested reader should refer to [29]).

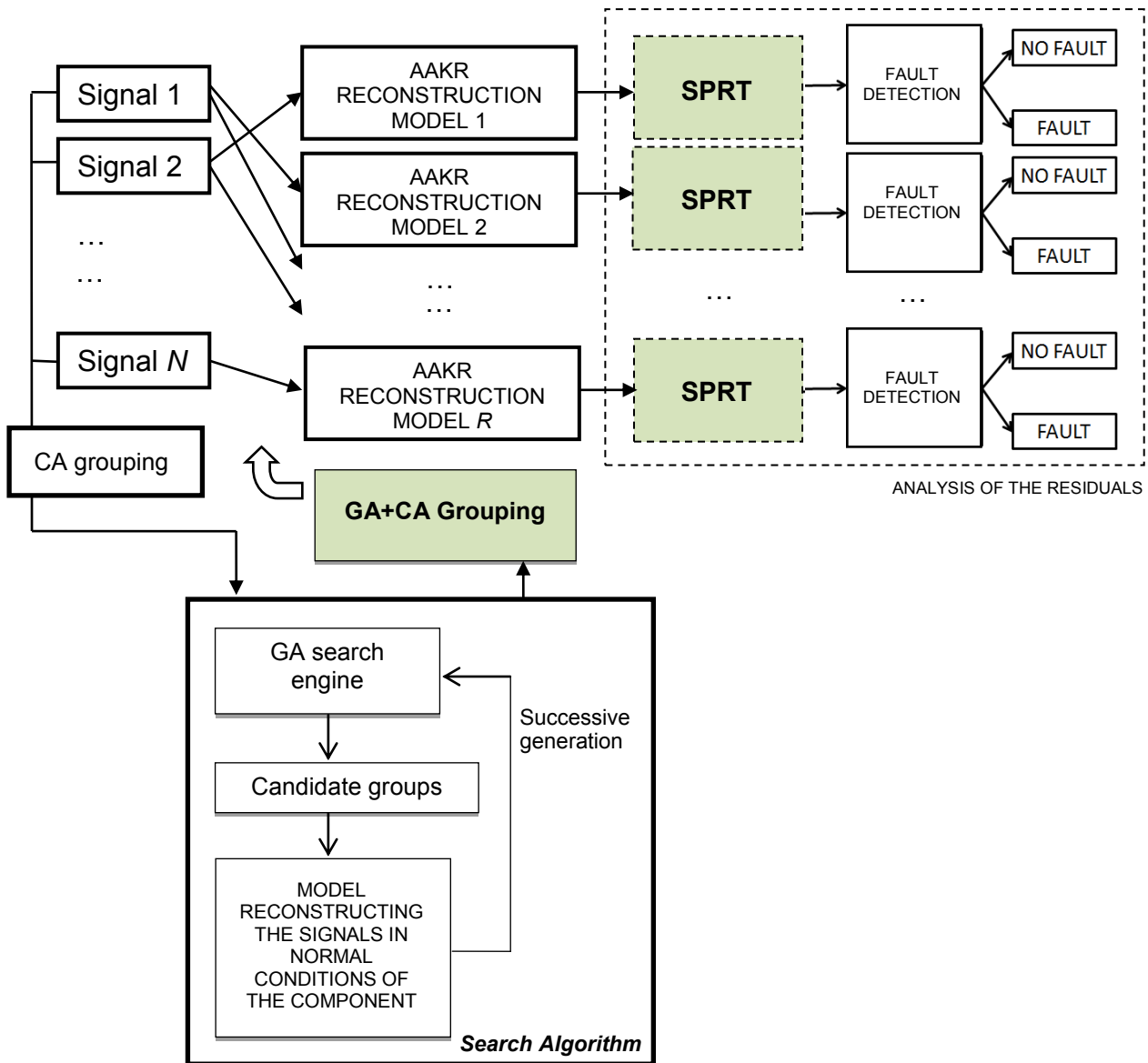


Fig. 2. The condition monitoring scheme for fault detection adopted in this work.

To balance false and missed alarms in the fault detection, it is possible to perform an analysis of the residuals $\vec{r} = \vec{x}^{obs} - \vec{\hat{x}}^{nc}$ to declare whether a component fault has occurred (Fig. 2, top right). Conventional fault

detection systems are based on deterministic rules, i.e., simple tests that compare observed signal values to given thresholds. This way of proceeding may suffer from either large false alarm rates α (if thresholds are set too small), or high missed (or delayed) alarm rates β (if the thresholds are set too large), and they can fail dramatically, especially in situations where noisy data are present, or only slight drifts are observed prior to catastrophic faults [32]. On the other side, stochastic approaches regard residuals as random variables described by a probability law. Abnormal conditions are assumed to result in a modification of the residual probability law (for example, transition from a normal distribution with a given mean and variance to another normal distribution with different mean and variance). In the present work, the identification of the modification of the probability law describing the residuals is based on the Sequential Probability Ratio Test (SPRT) [33], [17], a statistical method for triggering an alarm with a controlled balance between false and missed alarms.

This framework of analysis is applied to a real case study concerning $N=46$ signals used to monitor the Reactor Coolant Pumps (RCPs) of a typical Pressurized Water Reactor (PWR); the monitoring scheme of Fig. 2 is applied in normal and abnormal conditions, and the occurring faults are detected. A practical guideline is provided for setting the SPRT parameter values for balancing false and missed alarms.

The rest of the paper is organized as follows. Section 2 illustrates the case study and the data available. Section 3 presents the hybrid approach for signal grouping based on CA and GA, embedding the AAKR method for signal reconstruction. In Section 4, the definition of alarm levels for detection of abnormal conditions using the SPRT method is given with respect to the case study of Section 2. Finally, Section 5 concludes the paper with some considerations.

2. The case study

The case study considers $N=46$ signals used to monitor the RCPs of a typical PWR. The signal values have been measured every hour for a period of 11 consecutive months on four RCPs, each one on a different line of the primary circuit of the NPP. A dataset has been provided, containing patterns (46-dimensional time series) corresponding to normal conditions, and cleared from outliers. The 46-dimensional patterns (5798) have been divided into a set X_M of 2798 patterns used to perform the hybrid signal grouping (Section 3), and a validation set X_V of 3000 patterns used to validate the condition monitoring and fault detection scheme (Section 4).

3. The hybrid approach for signal grouping, with AAKR modelling for signal reconstruction

The AAKR model is used to reconstruct the signal values in normal conditions of operation, \bar{x}^{nc} , from the observed measurements, $\bar{x}^{obs} = (x^{obs}(1), \dots, x^{obs}(N))$. The reconstruction is done by a weighted sum of the

observations (see the Appendix for further details on the AAKR). The model is applied to the signals of each of the subgroups in which the signals are partitioned by a hybrid wrapper approach based on CA and GA.

In [29], it has been shown that this hybrid method leads to reconstructions that are more tolerant to the fault propagation problem (that has been mentioned in the Introduction) than proceeding with the reconstruction based on the single group of all signals [19], [27], or on groups of signals defined by a filter CA approach only [19], [25], or by a wrapper GA-based approach only [28].

The hybrid approach consists of using CA to identify groups of highly correlated signals, and GA to define the group assignment of the remaining signals [29]. Application to the case study of interest leads to CA identifying 5 groups, with one formed by 24 highly correlated signals, and GA searching chromosomes of 22 elements, each one corresponding to one of the 22 signals not assigned to a group by CA. In this way, the dimension of the GA search space is reduced from $5^{46} (\approx 10^{32})$ possible group combinations to $5^{22} (\approx 10^{15})$. In the end, the hybrid approach identifies 5 groups so formed [29]:

- Group 1 has 30 signals related to the different temperatures measured in different parts of the RCP (e.g., seals, and hydraulic and engine components),
- Group 2 has 4 signals measuring the rotating speed of the engine components of the RCP,
- Group 3 has 3 signals measuring the water mass flow rate inside the RCP,
- Group 4 has 5 signals measuring the water mass flow rate coming from the first seal of the RCP, and
- Group 5 has 4 signals measuring the water mass flow rate flowing to the first seal of the RCP.

4. Fault detection

After grouping of the signals into 5 subgroups, 5 AAKR reconstruction models are developed (one for each subgroup), and a strategy of fault detection is implemented based on SPRT to keep under control the misclassification probabilities α , and β , i.e., the false, and missed alarm probabilities, respectively.

4.1. The SPRT method

Let r_i represent the value of one signal at the generic i -th measurement time t_i , and let us assume that a sequence of values $\{R_n\} = r_1, r_2, \dots, r_n$ is available. The SPRT is a binary stochastic hypothesis test which sequentially analyzes the process observations $\{R_n\}$ and decides whether they are consistent with a null hypothesis H_0 represented by a given probability law, or rather with an alternative hypothesis H_1 represented by a different probability law [32]. The test is driven by user-specified misclassification probabilities α and β .

In our context of fault detection, r_i is the residual between the signal measurement and its reconstruction at time t_i , $r_i = x^{obs}(t_i) - \hat{x}^{obs}(t_i)$. The null hypothesis H_0 corresponds to the statistical behavior of the residuals when the component is under normal conditions, and the alternative hypothesis H_1 corresponds to that case of abnormal conditions.

Without loss of generality, here we illustrate the test considering as the null hypothesis H_0 of a Gaussian distribution with mean $\mu_0=0$, and variance σ^2 ; and as the alternative hypothesis H_1 of a Gaussian distribution

with mean $\mu_1 > 0$, and same variance σ^2 . This test is usually referred to as test for positive mean, and can be used for the identification of positive offsets of amplitude μ_1 . However, SPRT can be also applied for the identification of negative offsets, with increased or reduced variance [34]. When the assumption of Gaussian distributions might impose potentially misleading behavior on extreme values of the residuals, i.e., tails of the distributions, extreme value statistics can integrate into SPRT for dealing with the difficulty of fault detection [35]. Furthermore, SPRT can be successfully applied to any other distribution, if needed; as an example, in [36] it has been shown that SPRT overtakes other statistical methods when dealing with a Bernoulli distribution of residuals.

The SPRT operates as follows [37]. Every time a new value r_i becomes available, a test index is calculated and compared to two stopping boundaries $\ln(A)$ (lower threshold), and $\ln(B)$ (upper upper threshold), with $\ln(A) < \ln(B)$, that are related to the misclassification probabilities α and β by the expressions

$$\ln(A) = \ln\left(\frac{\beta}{1-\alpha}\right) \quad (1)$$

$$\ln(B) = \ln\left(\frac{1-\beta}{\alpha}\right) \quad (2)$$

The test index is equal to the natural log of a likelihood ratio (L_n), which is the ratio between the probabilities that the alternative hypothesis H_1 and the null hypothesis H_0 are true:

$$L_n = \frac{\text{probability of observed sequence } \{R_n\} \text{ given } H_1 \text{ true}}{\text{probability of observed sequence } \{R_n\} \text{ given } H_0 \text{ true}} \quad (3)$$

Three different cases may arise:

- if the logarithm of the likelihood ratio (3) is greater than or equal to the logarithm of the upper threshold (i.e., $\ln(L_n) \geq \ln(B)$), then it can be concluded that the alternative hypothesis H_1 is true;
- if the logarithm of the likelihood ratio is less than or equal to the logarithm of the lower threshold limit (i.e., $\ln(L_n) \leq \ln(A)$), then it can be concluded that the null hypothesis H_0 is true;
- if the logarithm of the likelihood ratio falls between the two limits (i.e., $\ln(A) < \ln(L_n) < \ln(B)$), then there is not enough information to discriminate (and, incidentally, no other statistical test could reach a decision with the same given probabilities α and β [32]).

Given the sequence of signal values $\{R_n\} = r_1, r_2, \dots, r_n$, the probability that the null hypothesis H_0 (i.e., Gaussian distribution with mean 0 and variance σ^2) is true is given by [37]

$$P(r_1, r_2, \dots, r_n | H_0) = \frac{1}{(2\pi\sigma^2)^{n/2}} e^{\left[-\frac{1}{2\sigma^2} \sum_{i=1}^n r_i^2\right]} \quad (4)$$

Similarly, the probability of the alternative hypothesis H_1 (i.e., mean $\mu_1 > 0$ and variance σ^2) is

$$P(r_1, r_2, \dots, r_n | H_1) = \frac{1}{(2\pi\sigma^2)^{n/2}} e^{\left[-\frac{1}{2\sigma^2} \left(\sum_{i=1}^n r_i^2 - 2 \sum_{i=1}^n r_i \mu_1 + \sum_{i=1}^n \mu_1^2 \right) \right]} \quad (5)$$

The ratio of the probabilities in (4) and (5) gives the likelihood ratio L_n for the positive mean test

$$L_n = e^{\left[-\frac{1}{2\sigma^2} \left(\sum_{i=1}^n \mu_1 (\mu_1 - 2r_i) \right) \right]} \quad (6)$$

The SPRT index for the positive mean test is finally obtained by taking the logarithm of the foregoing likelihood ratio:

$$SPRT = \ln(L_n) = -\frac{1}{2\sigma^2} \left(\sum_{i=1}^n \mu_1 (\mu_1 - 2r_i) \right) = \frac{\mu_1}{\sigma^2} \sum_{i=1}^n \left(r_i - \frac{\mu_1}{2} \right) \quad (7)$$

See that (1)-(7) are defined according to the hypothesis of a Gaussian distribution of the residuals $\{R_n\} = r_1, r_2, \dots, r_n$. Obtaining the stopping boundaries and the SPRT index for any other probability distribution P is straightforward [36].

In any case, the application of the SPRT requests the setting of four parameters:

- the residual variance in normal conditions (σ^2),
- the expected offset amplitude (μ_1),
- the false alarm probability (α), and
- the missed alarm probability (β).

The values of these parameters influence the time necessary to deliver a decision, i.e., the time necessary for the SPRT to choose among H_0 and H_1 . Assuming again for H_0 a Gaussian pdf with mean $\mu_0=0$ and variance σ^2 , and for H_1 a Gaussian pdf with mean $\mu_1>0$ and the same variance σ^2 , the expected sample number, hereafter called Average Sample Number (ASN), for a decision when the residuals $\{R_n\}$ are distributed according to a Gaussian distribution with mean value μ and variance σ^2 , is given by [38]

$$E[n; \mu] \approx \frac{2\sigma^2 \left\{ \frac{A^h - 1}{A^h - B^h} \ln \frac{\beta}{1 - \alpha} + \frac{1 - B^h}{A^h - B^h} \ln \frac{1 - \beta}{\alpha} \right\}}{\mu_1 (2\mu - \mu_1)} \quad (8)$$

where

$$h = \frac{\mu_1 - 2\mu}{\mu_1} \quad (9)$$

Notice that the approximate theoretical ASN

1. is directly proportional to σ^2 , meaning the larger σ^2 , the noisier are the observed values and the more difficult a decision is; and

2. is inversely proportional to μ_1 meaning it is easier for the SPRT to select a hypothesis when μ_1 , the mean value of H_1 , is far away from $\mu_0=0$, the mean value of the null hypothesis.

With respect to σ^2 , if the signal reconstruction model has been applied to past measurements in normal conditions, it can be easily estimated considering the variance of the past values of the residuals. The other three parameters have to be fixed by the analyst according to his or her experience, and needs. In Section 4.3, a practical guideline is provided for this setting.

As a final remark, it is worth noticing that SPRT has been shown to be optimum, in the sense of minimizing ASN under the hypotheses H_0 , and H_1 for fixed values of false and missing alarms probabilities, α and β , respectively, if the signal values $\{R_n\} = r_1, r_2, \dots, r_n$, are i.i.d [34]. In the case of non-i.i.d measurements, as in our case study, no optimality has been established, although the detection performance is still good in terms of false and missed alarm probabilities, as it is shown in [39], and by the results shown in Section 4.2. The procedural steps for the application of the SPRT are given in the pseudo-code of Fig. 3.

```

1. 0 → i   Set to 0 the time index i
2. 0 → SPRT Set to 0 the SPRT index
3. i+1 → i Increase the time index
4. At time  $t_i$ , collect the new residual  $r_i$ 
   a. Update the SPRT index (Eq. 7)
   b. Compare the SPRT index to the upper  $[\ln(B)]$  and lower  $[\ln(A)]$  decision boundaries
   c. Detect the component condition, depending on the test outcome:
       if SPRT <  $\ln(A)$  (lower limit is passed) then
           the component is declared in normal conditions
           Go to 2 and start again the test for the successive times;
       else if SPRT >  $\ln(B)$  (upper limit is passed) then
           the component is declared in fault conditions
           an alarm flag is raised
           Go to 2 and start again the test for the successive times;
       else if  $\ln(A) < \text{SPRT} < \ln(B)$  (neither limit has been passed) then
           no decision is made
           Go to 3

```

Fig. 3. The pseudo-code of the procedural steps of the SPRT.

4.2. SPRT application to the case of RCP of a PWR

We focus on the signal ‘water flowing to the first seal of the pump in line 1’ (hereafter referred to as signal 4a), which belongs to Group 1. The X_M historical values of the residuals of the signal under normal conditions have been analyzed to set the hypothesis H_0 , which describes the residual distribution under these conditions. The residual distribution has been confirmed to be Gaussian with mean value $\mu_0=0.0094$, and variance $\sigma^2=0.014$, by the Kolmogorov–Smirnov test [40]. The very small mean value of the residuals has confirmed that the reconstruction under normal conditions is not biased, and can be approximated by a distribution with $\mu_0=0$. Residuals have been further tested for s -independency with the Durbin–Watson test [41]. Small values of the test outcome d indicate that residuals are, on average, positively correlated; whereas if $d>2$, successive residuals are, on average, negatively correlated. In our case, $d=0.84$, and thus we can conclude that residuals are not s -independent, and slightly positively correlated.

To test the performance of the proposed SPRT for fault detection, an offset of amplitude equal to 1% of the standard deviation of the signal values has been injected onto the measurements of signal 4a. The drift starts at $t=1$ hour, and continues until $t=1000$ hours. In Fig. 4, the abnormal conditions’ measurements x_{4a}^{obs} and

their reconstructions \hat{x}_{4a}^{nc} by the AAKR model are shown. Fig. 5 reports the obtained residuals $\{R_n\} = r_1, r_2, \dots, r_n$, where $r_i = x_{4a}^{obs}(t_i) - \hat{x}_{4a}^{nc}(t_i)$, $i = 1, 2, \dots, n$. Table I reports the SPRT parameters used.

Table I
List of the principal parameters used for the SPRT implementation of the positive offset test

<i>Parameter</i>	<i>Value</i>
α	0.01
β	0.01
μ_0	0
μ_1	0.46
σ	0.12

Fig. 6 illustrates the outcomes of the SPRT in this case study. The SPRT alarm index quickly moves from zero to the upper bound $\ln(B)$ allowing acceptance of the Hypothesis H_1 , and thus to promptly detect the presence of abnormal conditions. Once the threshold is passed, the SPRT index is reset to zero, and the test continues confirming the alarm in a number of time steps similar to the theoretical ASN (8). In fact, the empirical ASN, i.e. the average time elapsed between two alarms, turns out to be equal to 1.2 samplings, which corresponds to 1.2 hours, with measurements taken every hour. Notice, however, that increasing the measurement frequency will result in decreasing the mean time necessary to give the alarms.

It is also interesting to notice that in the 833 times that a decision is taken, it has been hypothesis H_1 (correct hypothesis in the present case study) in 827 cases, and hypothesis H_0 in 6 cases (wrong hypothesis in the present case study). The fraction of missing alarms $6/827=0.007$ is smaller than $\beta=0.01$, in accordance with the analyst-defined parameter value (Table I). Note that, in this case study, a clear tendency of the mean μ of the residuals to differ from zero is easily detectable by an analyst observing Fig. 5, and the SPRT has performed as expected.

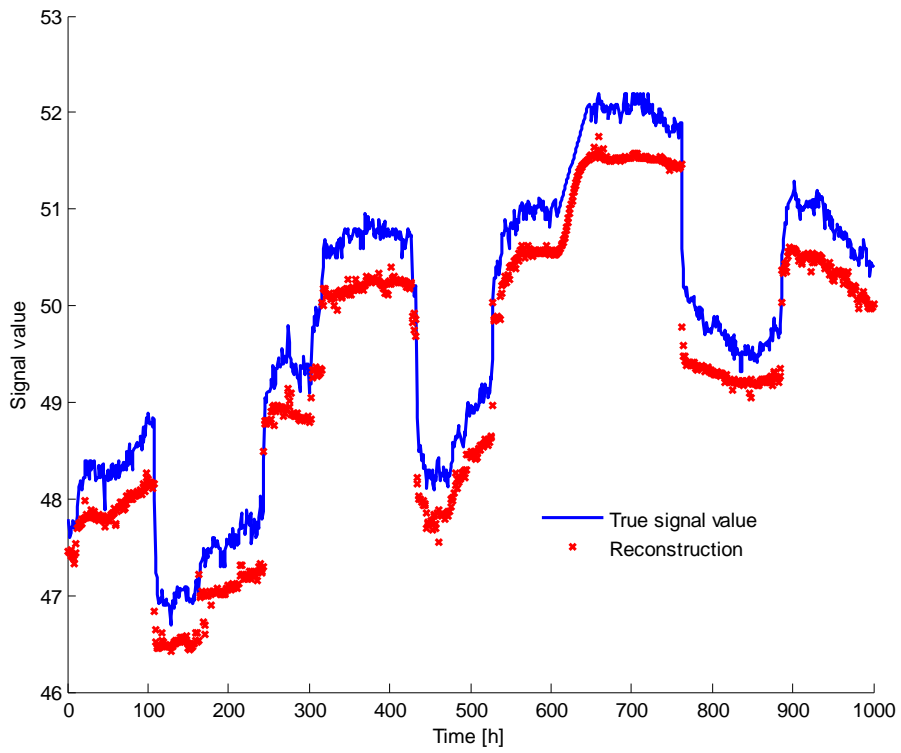


Fig. 4. Abnormal conditions' measurements and reconstructions.

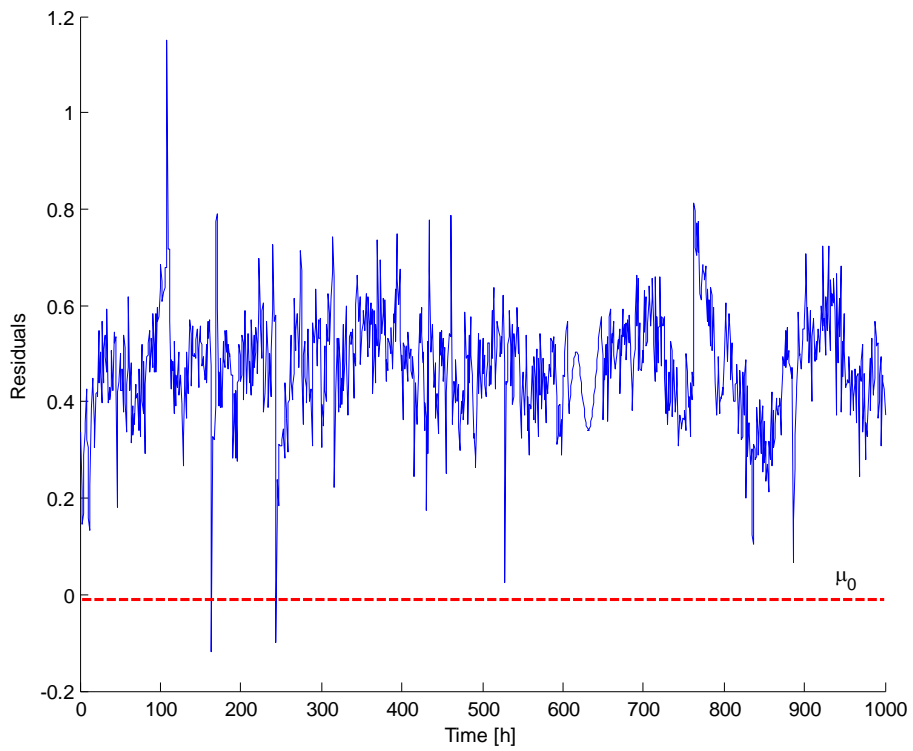


Fig. 5. Residuals: difference between measurements and reconstructions of Fig. 4.

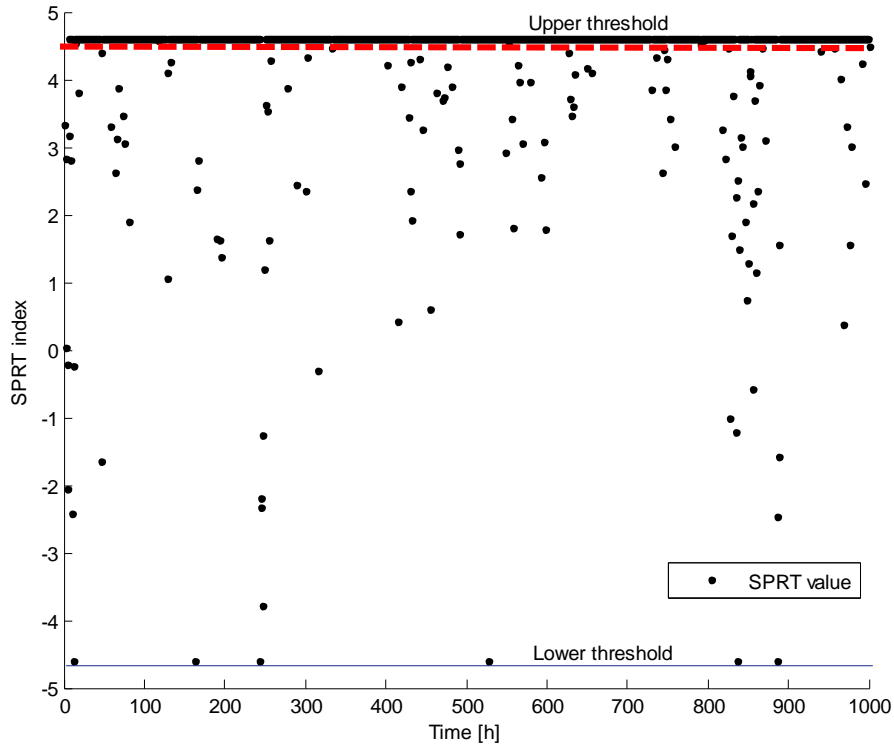


Fig. 6. Outcomes of the SPRT for the residuals in Fig. 4.

The SPRT has then been tested in the application for the identification of normal conditions. To this purpose, the reconstruction of the signal has been considered during 1000 hours, under normal conditions (i.e., no offset has been applied to the signal measurements).

Fig. 7 shows the measurements x_{4a}^{obs} and the reconstructions \hat{x}_{4a}^{nc} obtained by the AAKR reconstruction models. Fig. 8 reports the corresponding residuals $\{R_n\} = r_1, r_2, \dots, r_n$, which in this case have a mean value close to 0.

Fig. 9 shows the SPRT index obtained by applying the test with the same parameters of Table I. Notice that the SPRT alarm index moves quickly from zero towards the lower boundary $\ln(A)$, thus indicating acceptance of the hypothesis H_0 (component in a normal conditions). In this case, the empirical ASN has been 1.2 samples, and a decision has been taken 835 times, with 831 times the hypothesis H_0 (correct hypothesis), and 4 times the hypothesis H_1 (wrong hypothesis). The fraction of false alarms $4/831=0.005$ is smaller than $\alpha=0.01$, in accordance with the analyst-defined parameter value (Table I).

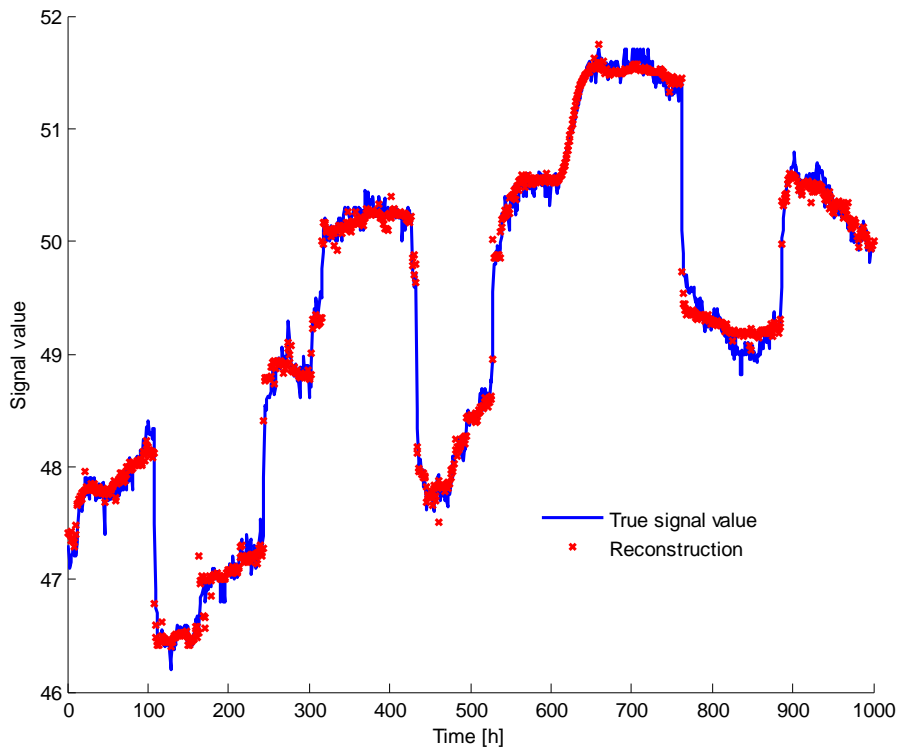


Fig. 7. Nominal conditions' measurements and reconstructions.

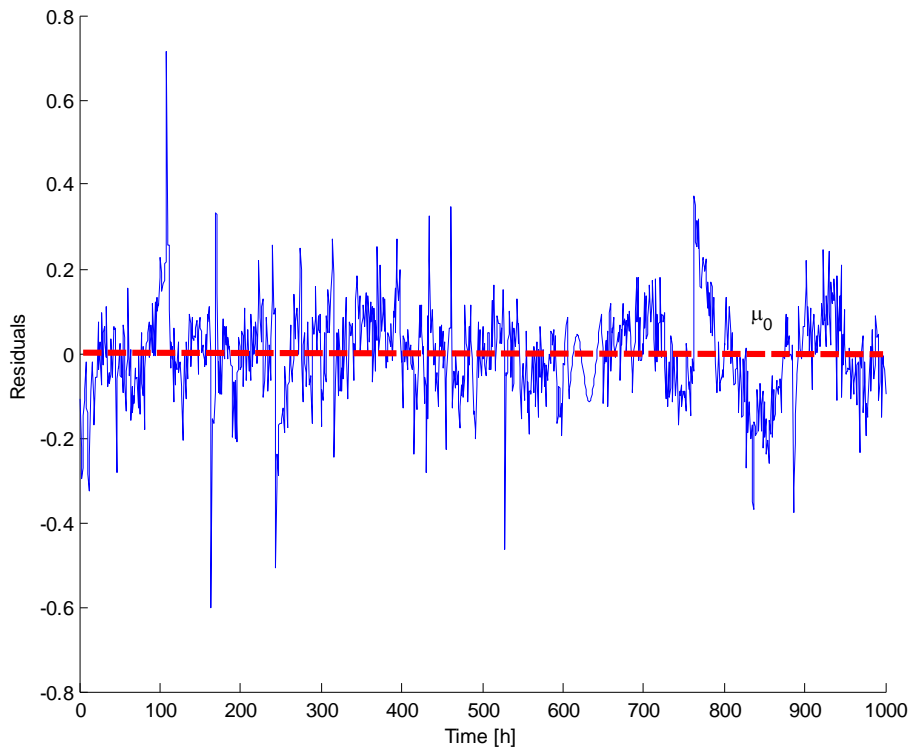


Fig. 8. Residuals: difference between measurements and reconstructions of Fig. 7.

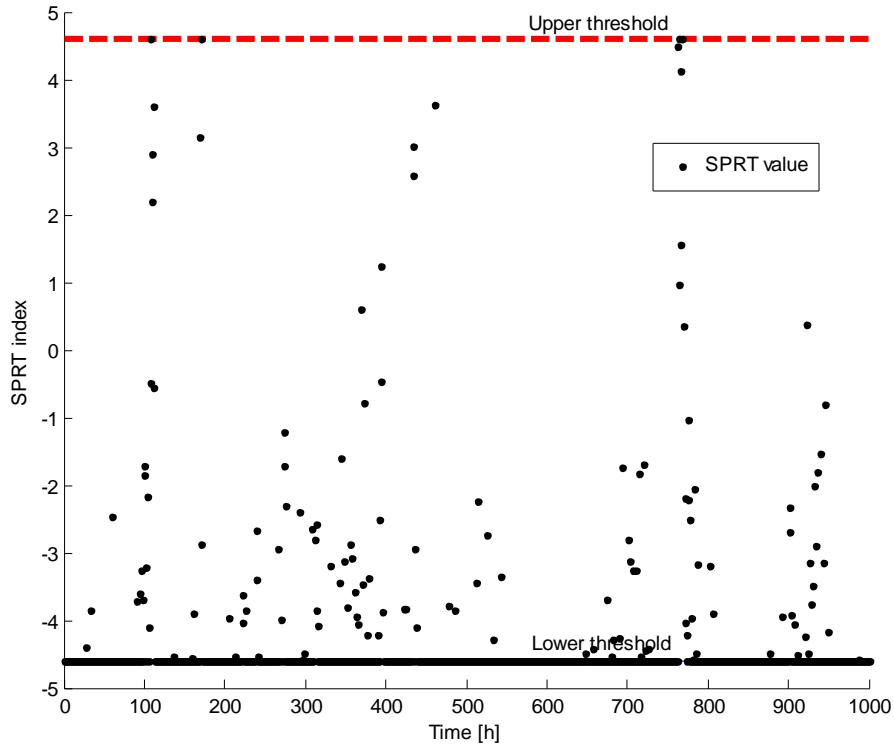


Fig. 9. Outcomes of the SPRT for the signals reconstructed in Fig. 7.

4.3. SPRT parameters setting

The application of the SPRT requires setting the values of the parameters in Table I. As previously noticed in Section 4.1, the correct value of the parameter σ^2 can be estimated by considering the variance of the residuals under normal conditions. Parameters α and β relate to the false and missing alarm probabilities, respectively, and their values are set by the analyst. The most troublesome parameter to set is μ_1 , the estimate of the mean value of the residuals in abnormal conditions; this quantity is normally not known in practical applications.

In this section, we analyze the influence of μ_1 on the results of the SPRT with the aim of providing some guidelines for setting its value.

The driving factors of the choice of μ_1 are:

- the Average Sample Number (ASN) necessary to deliver a decision,
- the percentage of false alarms when normal conditions' residuals are tested,
- the percentage of missing alarms when abnormal conditions' residuals are tested, and
- the tolerance of the method to identify abnormal conditions when the residuals are characterized by probability distributions different from those expected.

The corresponding desiderata are to have small ASN, small false and missed alarm rates, and a test not very sensible to the distribution of the residuals in abnormal conditions.

Therefore, in what follows, we focus on:

- the influence of the choice of μ_1 on the ASN, and false and missing alarm rates, for a given sequence of residuals $\{R_n\} = r_1, r_2, \dots, r_n$; and
- the influence of different distributions of the residuals, for a fixed μ_1 .

4.3.1. Influence of μ_1 on the ASN, and false and missing alarm probabilities

The theoretical behavior of the ASN as a function of the parameters μ_1 and σ defining the hypothesis H_1 can be obtained from (8). Fig. 10 shows the ASN behavior, assuming that the distribution of the residuals has a fixed mean $\mu=0.46$ (the same mean value of the residual in Fig. 5), while varying μ_1 and σ . In Fig. 11, a magnification of the lowest curve of Fig. 10 shows a qualitative agreement between the theoretical ASN obtained from (8) (circles) and the empirical one (crosses). As expected, the ASN increases with σ^2 , and decreases as μ_1 increases.

The choice of the value of μ_1 should also consider the desired balance between false and missed alarm rates. To this purpose, let us define the operating characteristic function, Q , as the probability that H_0 is accepted, and the power function, P , as the probability that H_1 is accepted. Theoretically it is expected that $P+Q=1$ because the SPRT should always deliver a decision if an infinite number of residual samples is available. In the remaining part of this section, we will analyze the behavior of Q and P as a function of the mean μ_1 of the alternative hypothesis H_1 , in both cases in which abnormal and normal conditions are tested. Note that the missed alarm rate is estimated by Q in an abnormal conditions test, and the false alarm rate by P in a normal conditions test.

Fig. 12 reports the experimental evolution of $P(\mu_1)$ and $Q(\mu_1)$ for different values of μ_1 , when the abnormal conditions' residuals of Fig. 5 are tested. Several SPRT tests with different values of μ_1 have been performed on the 1000 available residuals, and we have collected the number of times in which hypothesis H_0 or H_1 have been delivered. Notice several points.

- For small values of μ_1 , the SPRT test does not deliver any conclusion considering the 1000 available residuals. This result is confirmed by (8), which provides SPRT values larger than 1000 (outside the range of Fig. 10).
- When $\mu_1 \approx \mu/4 = 0.12$, the SPRT starts to give an alarm (accepting H_1) relatively often, with probability $P(\mu_1) > 1 - \beta$.
- When $\mu_1 > 2\mu \approx 1$, the SPRT begins accepting H_0 relatively often: the alternative hypothesis H_1 is not realistic for the case under analysis, and it has to be rejected with probability equal to 1 when $\mu_1 \approx 4\mu$, while accepting the null hypothesis H_0 .

Analogously to Fig. 12, Fig. 13 reports the experimental evolution of $P(\mu_1)$ and $Q(\mu_1)$ for different values of μ_1 when the normal conditions' residuals of Fig. 8 are tested. Notice that the larger μ_1 , the more probable is not rejecting H_0 .

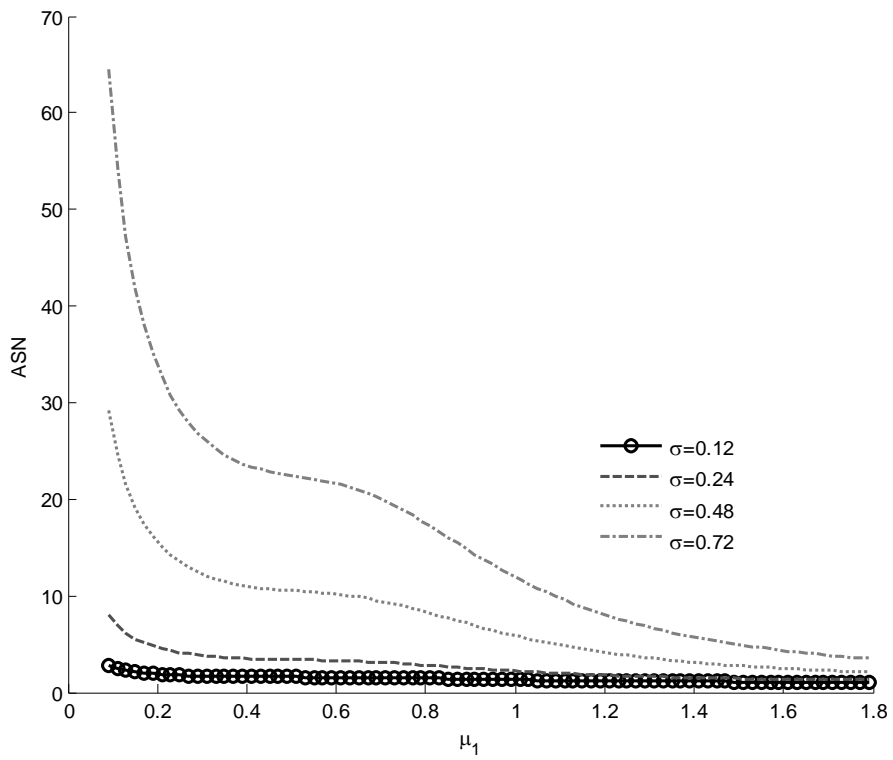


Fig. 10. Values of ASN for different σ , and different μ_1 , assuming $\mu=0.46$.

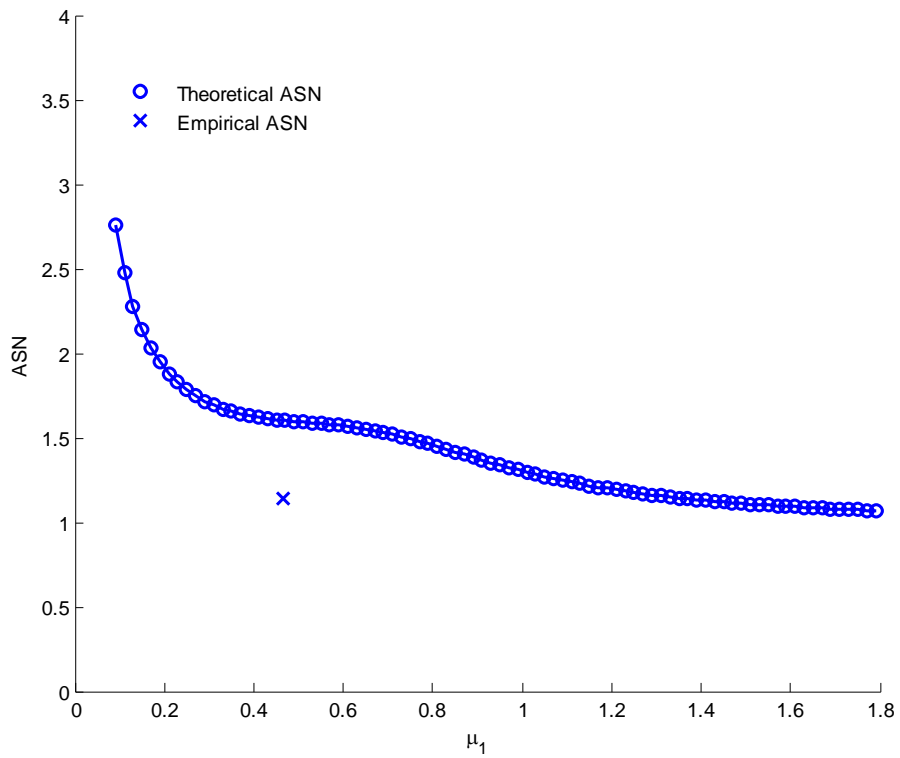


Fig. 11. Values of ASN for the case study under analysis at different μ_1 .

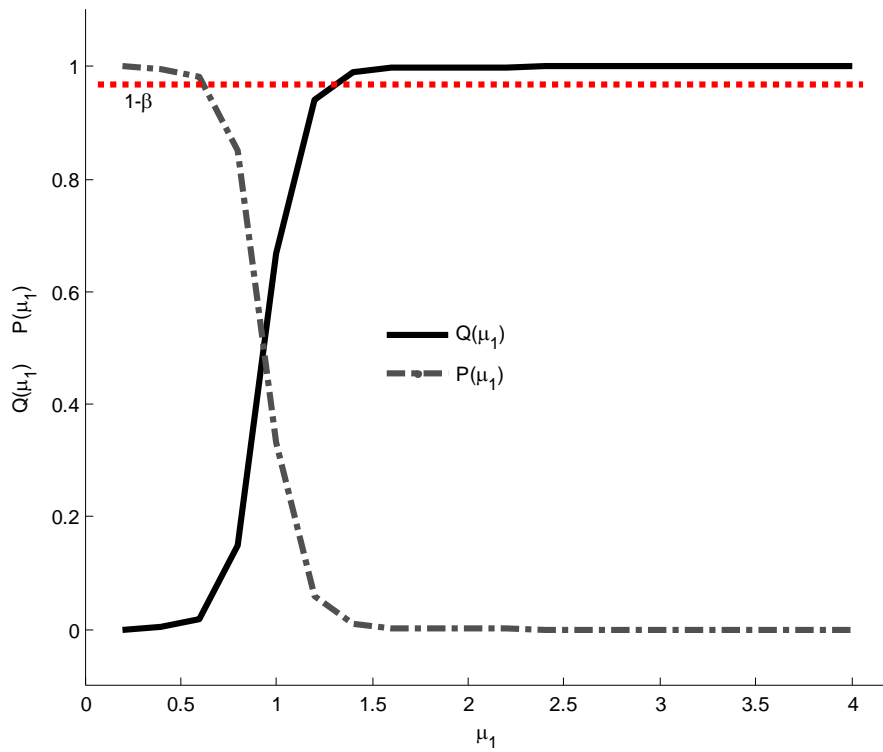


Fig. 12. $P(\mu_1)$, and $Q(\mu_1)$ testing the abnormal conditions' residuals of Fig. 5 with $\mu=0.46$, and $\sigma=0.12$.

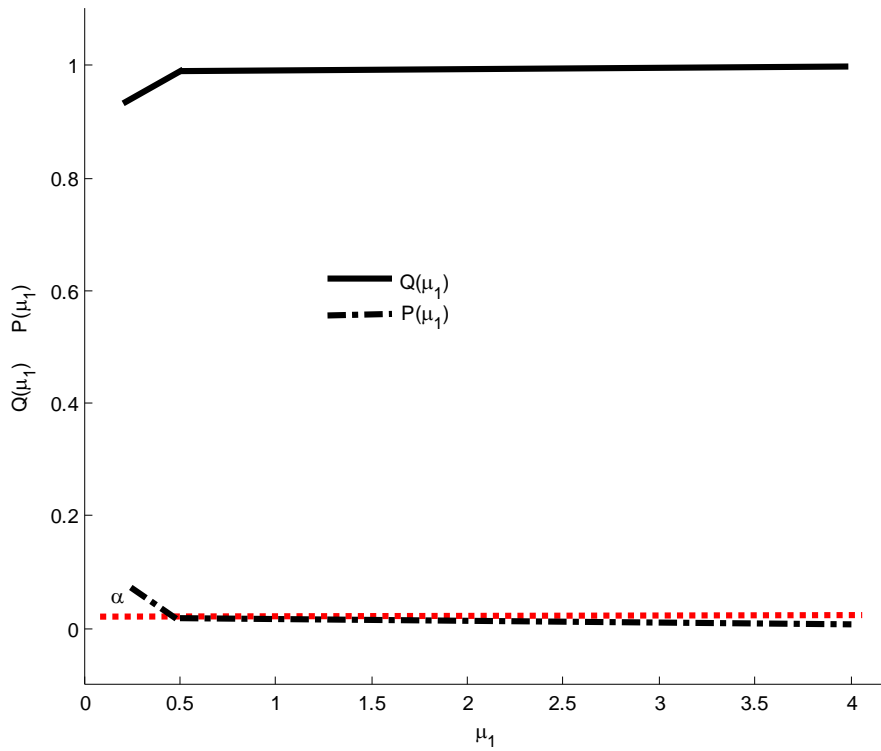


Fig. 13. $P(\mu_1)$, and $Q(\mu_1)$ testing the normal conditions' residuals of Fig. 5 with $\mu=0$, and $\sigma=0.12$.

In this case, when choosing the value μ_1 , the analyst should simultaneously consider Figs. 11, 12, and 13. The criteria of a small ASN and of a low rate of false alarms would suggest taking a large value of μ_1 because both the ASN (Fig. 11) and the false alarm probability (P curve in Fig. 13, obtained through testing normal conditions' residuals) are decreasing with μ_1 . On the contrary, the objective of minimizing the missing alarm rate would suggest using a low value of μ_1 because the missing alarm probability (Q curve in Fig. 12, obtained testing a normal conditions' residual) is increasing with μ_1 , when a set of residuals are tested, and the system is working in abnormal conditions. A compromise solution for μ_1 needs to be found, able to recognize both normal and abnormal conditions in acceptable time. With reference to the case study analyzed, an indication of taking a value of μ_1 equal to μ can be suggested. The estimated ASN is not the smallest possible (which could be reached with large values of μ_1), but it can guarantee a good trade-off between small ASN and the reliability of the decision provided by the SPRT.

4.3.2. *SPRT results in case of different distributions of the residuals*

For the case study at hand, we have suggested setting μ_1 equal to μ to properly balance the delay in the detection and the probability of false or missed alarms. However, because it is usually not easy for an analyst to a priori quantify the consequences of abnormal conditions on the measured signals, and thus the expected behavior of the residuals from which μ is estimated, this suggestion is not easily applicable. In practice, however, one can identify, for each signal, the amplitude of the minimum offset that he or she is interested in identifying. This offset can be considered equal to the expected mean value of the residuals between the signal in abnormal conditions (x^{obs}) and the expected value of the signal in normal conditions (\hat{x}^{nc}). For example, in Section 4.2, the minimum amplitude of the offset that has been considered is equal to 1% of the signal standard deviation.

An interesting question arises: which is the behavior of the SPRT in the case of residuals with Gaussian probability distributions different from those supposed in H_1 ? Basically, we want to know what is going to happen if we have fixed a given value of μ_1 , according to expert judgment, and then we use the SPRT for the detection of abnormal conditions characterized by a residual distribution with a mean value μ different from μ_1 , or a variance σ^2 different from that of H_1 .

To this purpose, Fig. 14 shows the theoretical behavior of the ASN for different values of the residual mean μ and its standard deviation σ (8), when μ_1 is fixed. As expected, if the standard deviation of the residual increases, the ASN tends to become larger. Notice also that, s -independently from the standard deviation of the residuals, the maximum of the ASN is reached for μ equal to $\mu_1/2$.

Finally, observe that for $\mu < \mu_1/2$ the smaller μ is, the smaller is also the time necessary for the SPRT to deliver a decision. Unfortunately, in these cases in which an abnormal conditions with small μ is tested, the delivered decision tends to be the wrong hypothesis H_0 (normal conditions) because the residual distribution results are very similar to the normal conditions' residual distribution (see Fig. 12 for large μ_1). On the other side, for $\mu > \mu_1/2$, the larger the mean value of the residual is, the smaller the time necessary for the SPRT to deliver a decision is. Thus, in this case, the delivered decision tends to be the correct hypothesis H_1 .

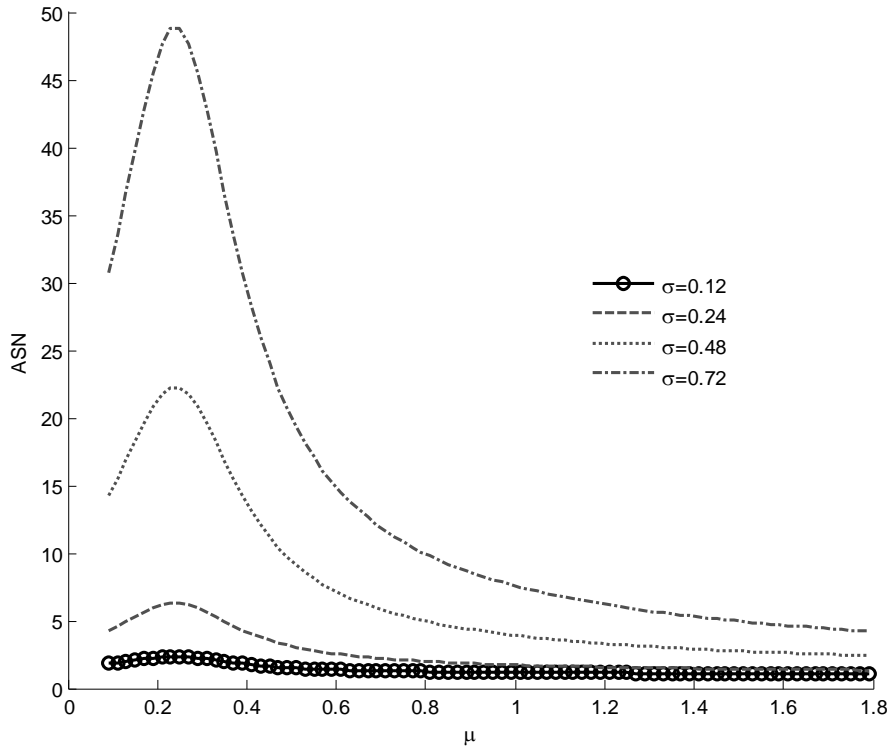


Fig. 14. Values of ASN for different σ and μ , assuming μ_1 fixed ($\mu_1=0.46$).

Consider an additional example to further clarify the SPRT outcomes when testing residuals with distributions having a mean value μ different from μ_1 . To this purpose, we have simulated a new abnormal conditions on signal 4a which starts at $t=200$ hours, and consists in an offset of increasing amplitude: 0.25% of the standard deviation of the signal values in normal conditions in the time [201-400] hours, 0.5%, in the time interval [401-600] hours, 0.75% in the time interval [601-800] hours, and 1%, in the time interval [801-1000] hours. Fig. 15 shows the measurements x_{4a}^{obs} , and the reconstructions \hat{x}_{4a}^{nc} obtained by the AAKR reconstruction models. Fig. 16 reports the corresponding residuals $\{R_n\} = r_1, r_2, \dots, r_n$.

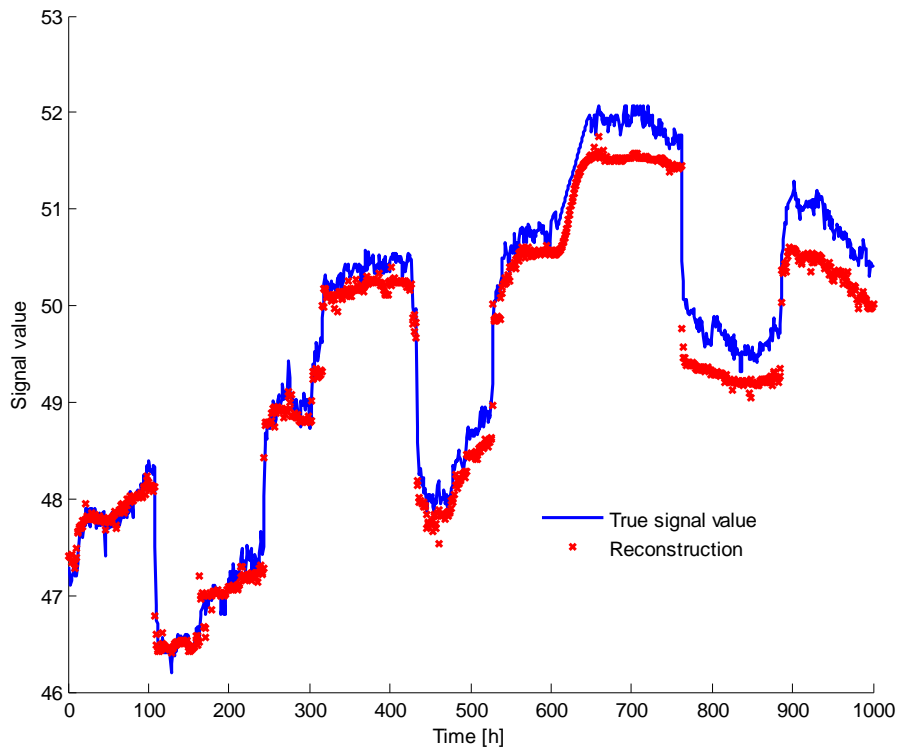


Fig. 15. Signal 4a measurements and reconstructions. Normal conditions from 1hour to 200 hours, and abnormal from 201 hours to 1000 hours.

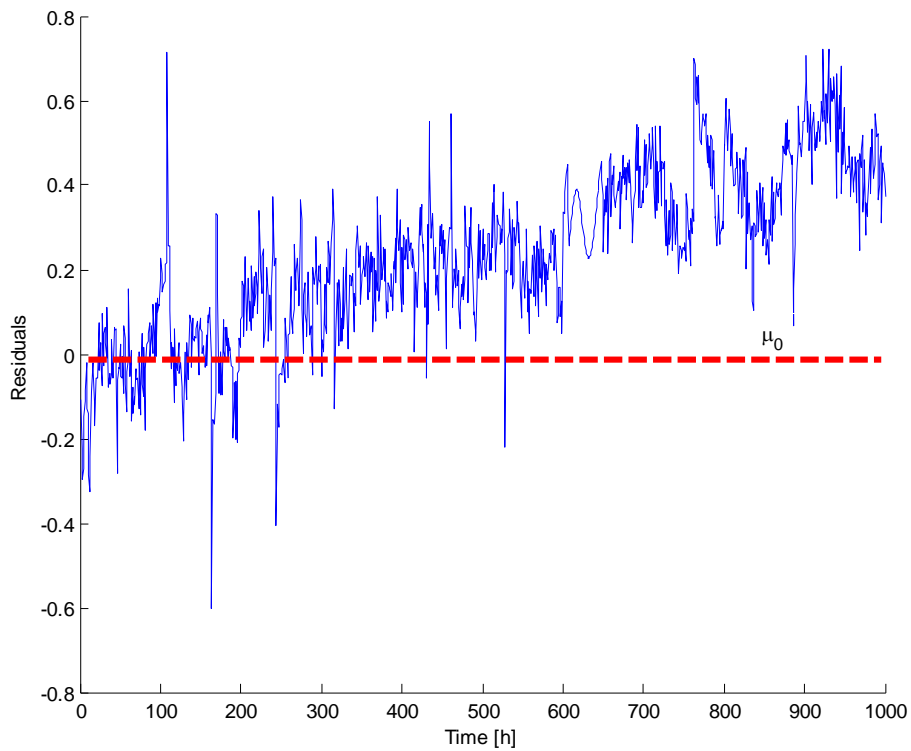


Fig. 16. Residuals: difference between the measurements and the reconstructions of Fig. 15.

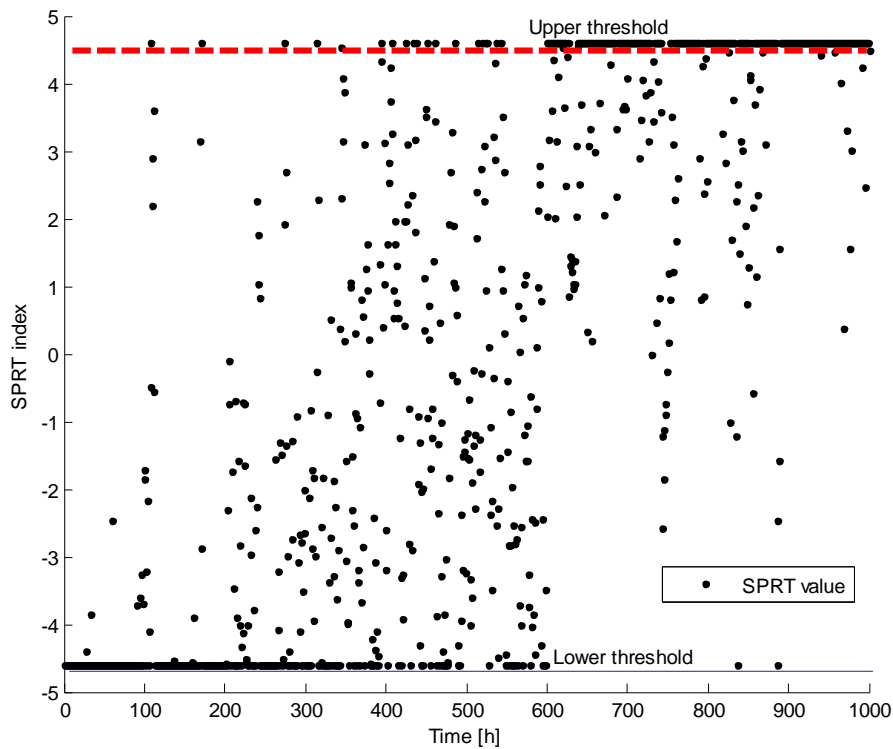


Fig. 17. Outcomes of the SPRT for the signals reconstruction reported in Fig. 15, $\mu_1=0.46$.

The SPRT with the same parameters of Table I has been applied to the residuals. Notice that the choice of $\mu_1=0.46$ indicates that the analyst is interested in identifying offsets of amplitude 0.46 or larger.

Fig. 17 shows the outcomes of the SPRT. Table II reports the number of times in which the SPRT has correctly recognized normal and abnormal conditions, and an estimate of the ASN in the different time intervals.

Table II

Performance of the SPRT test in the different time intervals

Time interval	Offset	Estimated ASN	Number of times in which normal conditions have been detected	Number of times in which abnormal conditions have been detected
[0-200]	No	1.2	150	2
[201-400]	Yes (amplitude = 0.11)	1.9	70	5
[401-600]	Yes (amplitude = 0.23)	2.4	15	17
[601-800]	Yes (amplitude = 0.34)	2.1	0	94
[801-1000]	Yes (amplitude = 0.46)	1.2	2	142

Notice that, as expected, when in the time interval $t=[1-200]$ hours, the component is under normal conditions, the SPRT index moves quickly from zero towards the lower boundary $\ln(A)$, thus indicating to

accept the hypothesis H_0 (component under normal conditions) with high probability. Then, when $t = [201-400]$ hours ($\mu=0.11$, $\mu_1=0.46$, $\mu < \mu_1/2$), the decisional process is still very fast (see Fig. 14); but, although the case is one of abnormal conditions (an offset of small amplitude is applied to the signal), the delivered decision tends to be the wrong hypothesis H_0 (normal conditions) because the residuals distribution is very similar to the normal conditions' residuals distribution. Later, for $t = [401-600]$ hours ($\mu=0.23$, $\mu_1=0.46$, $\mu \approx \mu_1/2$), the ASN reaches its maximum (see Fig. 14), but the missed alarm rate decreases in favor of a larger number of true alarm flags. For $t = [601-800]$ hours ($\mu=0.33$, $\mu_1=0.46$, $\mu > \mu_1/2$), the test becomes much more reliable because the false alarms rate approaches β . For $t = [801-1000]$ hours ($\mu=0.45$, $\mu_1=0.46$, $\mu \approx \mu_1$), the ASN is very small, and the delivered decision tends to be the correct hypothesis H_1 .

As a final investigation, we are interested in analyzing the results of the previous test considering an alternative hypothesis $\mu_1=0.11$, rather than $\mu_1=0.46$ as it was in the previous analysis. This alternative setting agrees with the suggestion given in the previous section, i.e., μ_1 equal to μ , where μ is the smallest value of deviation from nominal conditions that the experts foresee to occur in the case of anomalies.

Fig. 18 shows the outcomes of the SPRT. Starting from $t = 201$ hours, that is the onset of the abnormal conditions with $\mu = \mu_1 = 0.11$, the alarm flag is already raised with very high probability. See that the ASN is larger than that obtained in Fig. 11 due to the fact that the theoretical ASN is not at its minimum (which can be reached with very large values of μ_1 , see Fig. 19). However, assuming $\mu_1=0.11$ has allowed a guarantee of a good trade-off between small ASN and the reliability of the decision provided by the SPRT.

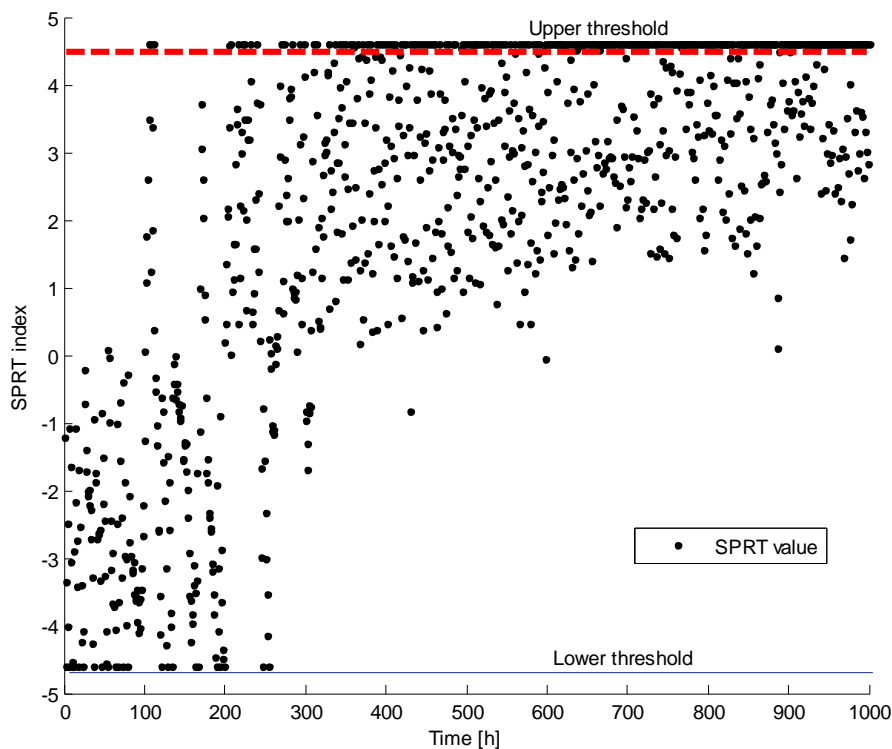


Fig. 18. Outcomes of the SPRT for the reconstructed signals reported in Fig. 15, $\mu_1=0.11$.

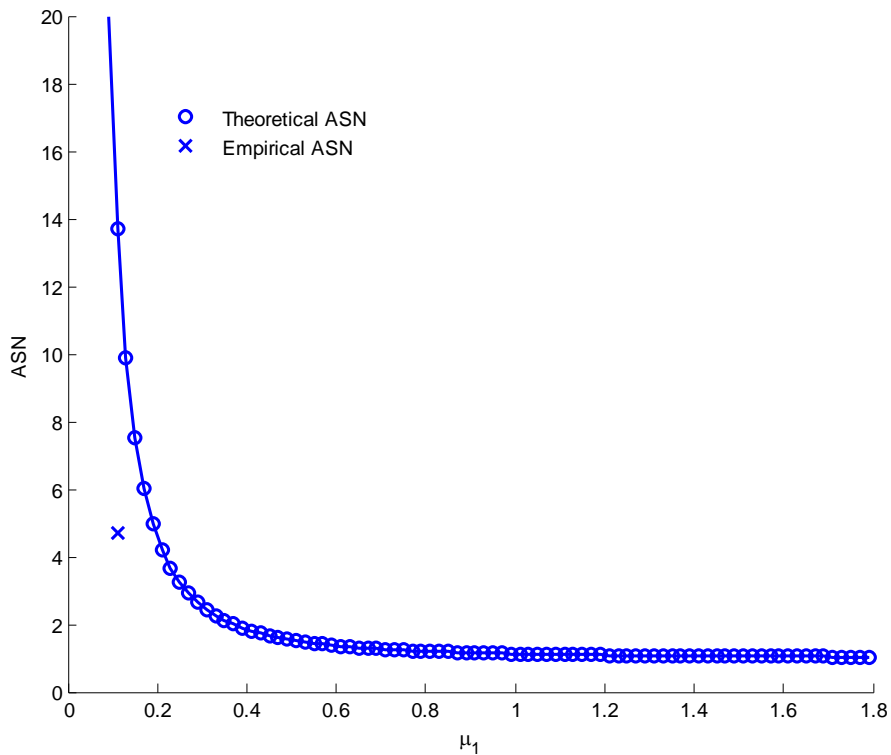


Fig. 19. Values of ASN for the case study of Fig. 15 at different μ_1 .

5. Conclusions

The problem of detecting faults in components of NPPs has been considered in this paper. Based on previously published works [29], a condition monitoring scheme capable of identifying the signal groups by a hybrid approach based on CA and GA has been adopted. This approach has been selected because of its capability to limit fault propagation with respect to a CA-based filter approach, and to demand a lower computational effort with respect to a GA-based wrapper approach. The grouping outcomes are then fed to a traditional empirical AAKR method for signal reconstructions.

On the basis of the reconstructions provided by the AAKR models (one for each signal group identified), the SPRT for the detection of abnormal conditions has been adopted for balancing misclassification probabilities, i.e., false and missed alarm rates. A novel procedure for setting the parameters used of the SPRT has also been proposed, for practical use.

A case study regarding the monitoring of the RCPs of a typical PWR has been considered. In the performed tests, the combination of a hybrid signal grouping technique with AAKR and SPRT has proven capable of detecting the onset of abnormal conditions with a controlled low percentage of false and missed alarms. Future work will entail the design of decision thresholds such that the SPRT strategy can guarantee the minimum time for the fault detection (ASN), even in the case of auto-correlated signals.

Appendix

The Auto-Associative Kernel Regression (AAKR) method

Let X^{obs-nc} be a matrix of observed data whose generic element $x^{obs-nc}(k, n)$ represents the k -th time observation, $k=1, \dots, T$, of the n -th measured signal, $n=1, \dots, N$, taken during normal plant conditions. The basic idea of the AAKR method is to reconstruct the signal values in case of normal conditions, \hat{x}^{nc} , given a current signal measurement vector, $\bar{x}^{obs} = (x^{obs}(1), \dots, x^{obs}(N))$, as a weighted sum of the observations in X^{obs-nc} . Thus, $\hat{x}^{nc}(n)$, the reconstruction of $x^{obs}(n)$, the n -th component of \bar{x}^{obs} , is given by

$$\hat{x}^{nc}(n) = \frac{\sum_{k=1}^T w(k) \cdot x^{obs-nc}(k, n)}{\sum_{k=1}^T w(k)} \quad (10)$$

The weights $w(k)$ are similarity measures obtained by computing the Euclidean distance between the current sensor measurements \bar{x}^{obs} and the k -th observation of X^{obs-nc} :

$$d^2(k) = \sum_{n=1}^N (x^{obs}(n) - x^{obs-nc}(k, n))^2. \quad (11)$$

Inserting it in the Gaussian kernel,

$$w(k) = \frac{1}{\sqrt{2\pi}h} e^{-\frac{d^2(k)}{2h^2}} \quad (12)$$

where the signal h defines the Gaussian bandwidth.

To provide in (11) a common scale across the different signals measuring different quantities, it is necessary to normalize their values. In the present work, the signal values are normalized according to

$$x(n) = \frac{x(n) - \mu(n)}{\sigma(n)} \quad (13)$$

where $x(n)$ is a generic measurement of signal n , and $\mu(n)$ and $\sigma(n)$ are respectively the mean and standard deviation of the n -th signal in X^{obs-nc} :

$$\mu(n) = \frac{\sum_{k=1}^T x^{obs-nc}(k, n)}{T}$$

$$\sigma(n) = \sqrt{\frac{\sum_{k=1}^T (x^{obs-nc}(k, n) - \mu(n))^2}{T}}$$

Acknowledgements

This research has been carried out under contract C935C50010 funded by EdF R&D (STEP Simulation et Traitement de l'information pour l'exploitation des systèmes de production, Chatou Cedex, France) that has provided the data on the RCP of the PWR.

References

- [1] J. Reifman, "Survey of artificial intelligence methods for detection and identification of component faults in nuclear power plants," *Nucl. Technol.*, vol. 119, pp. 76–97, 1997.
- [2] K.E. Holbert, B.R. Upadhyaya, "An integrated signal validation system for nuclear power plants," *Nuclear Technology*, vol. 92, pp. 411–427, 1990.
- [3] B.R. Upadhyaya, E. Eryurek, "Application of neural networks for sensor validation and plant monitoring," *Nuclear Technology*, vol. 97, pp. 170–176, 1992.
- [4] P.F. Fantoni, A. Mazzola, "A pattern recognition-artificial neural networks based model for signal validation in nuclear power plants," *Annals of Nuclear Energy*, vol. 23, pp. 1069–1076, 1996.
- [5] J.W. Hines, D.J. Wrest, R.E. Uhrig, "Signal validation using an adaptive neural fuzzy inference system," *Nuclear Technology*, vol. 119, pp. 181–193, 1997.
- [6] A.S. Erbay, B.R. Upadhyaya, "A personal computer-based on-line validation system for nuclear power plants," *Nuclear Technology*, vol. 119, pp. 63–75, 1997.
- [7] J.W. Hines, R.E. Uhrig, "Use of autoassociative neural networks for signal validation," *Journal of Intelligent and Robotic Systems*, vol. 21, pp. 143–154, 1998.
- [8] B. Rasmussen, J.W. Hines, R.E. Uhrig, "Novel Approach to Process Modeling for Instrument Surveillance and Calibration Verification," *Proceedings of the Third American Nuclear Society International Topical Meeting on Nuclear Plant Instrumentation and Control and Human-Machine Interface Technologies*, Washington DC, November 13–17, 2000.
- [9] E. Zio, M. Broggi, N. Pedroni, "Nuclear reactor dynamics on-line estimation by locally recurrent neural networks," *Progress in Nuclear Energy*, vol. 51, no. 3, pp. 573–581, 2009.
- [10] R. Penha, J.W. Hines, "Using principal component analysis modeling to monitor temperature sensors in a nuclear research reactor," *Proceedings of the 2001 Maintenance and Reliability Conference (MARCON 2001)*, Knoxville, TN, May 6–9, 2001.
- [11] J. Ding, J.W. Hines, R. Rasmussen, "Independent component analysis for redundant sensor validation," *Proceedings of the 2003 Maintenance and Reliability Conference (MARCON 2003)*, Knoxville, TN, May 4–7, 2003.
- [12] P. Baraldi, E. Zio, G. Gola, D. Roverso, M. Hoffmann, "Signal reconstruction by a GA-optimized ensemble of PCA models," *Nuclear Engineering and Design*, vol. 241, pp. 301–309, 2011.
- [13] R.M. Singer, K.C. Gross, R.W. King, "Application of pattern recognition techniques to online fault detection," *Proceedings of the Second Probability Safety Assessment Meeting (PSAM-II)*, San Diego, CA, March 20–25, 1994.
- [14] R.M. Singer, K.C. Gross, R.W. King, S. Wegerich, "A pattern recognition based, fault-tolerant monitoring and diagnostic techniques symposium on nuclear reactor surveillance and diagnostics," *SMORN VII*, Avignon, France pp. 13–14, 1995.
- [15] N. Zavaljevski, K.C. Gross, "Support vector machines for nuclear reactor state estimation," *Proceedings of the ANS Topical Meeting on Advances in Reactor Physics and Mathematics and Computation into the Next Millennium*, Pittsburgh, Pennsylvania, USA, May 7–14, 2000.
- [16] C.M. Rocco, E. Zio, "A support vector machine integrated system for the classification of operation anomalies in nuclear components and systems," *Reliability Engineering & System Safety*, Vol. 92(5), pp. 593–600, 2007.
- [17] J.W. Hines, D.R. Garvey, "Development and application of fault detectability performance metrics for instrument calibration verification and anomaly detection," *Journal of Pattern Recognition Research*, vol. 1, pp. 2–15, 2006.
- [18] R. Chevalier, D. Provost, R. Seraoui, "Assessment of statistical and classification model for monitoring EDF's assets," *Sixth American Nuclear Society International Topical Meeting on Nuclear Plant Instrumentation, Control and Human-Machine Interface Technologies*, Knoxville, USA, 2009.
- [19] P. Baraldi, R. Canesi, E. Zio, R. Seraoui, R. Chevalier, "Signal Grouping for Condition Monitoring of Nuclear Power Plants Components," *Seventh American Nuclear Society International Topical Meeting on Nuclear Plant Instrumentation, Control and Human-Machine Interface Technologies*, Las Vegas, USA, 2010.

- [20] P. Baraldi, F. Di Maio, L. Pappaglione, E. Zio, R. Seraoui, "Condition monitoring of electrical power plant components during operational transients," *Proceedings of the Institution of Mechanical Engineers, Part O, Journal of Risk and Reliability*, vol. 226, no. 6, pp. 568–583, 2012.
- [21] C. Yu, B. Su, "Eliminating false alarms caused by fault propagation in signal validation by sub-grouping," *Progress in Nuclear Energy*, vol. 48, pp. 371-379, 2006.
- [22] A. Krogh, J. Vedelsby, "Neural network ensembles, cross-validation and active learning," in: Tesauro, G., Touretzky, D.S., Loen, T.K. (Eds.), *Advances in Neural Information Processing Systems*, vol. 7. MIT Press, Cambridge, MA, pp. 231–238, 1995.
- [23] A.J.C. Sharkey, "On combining artificial neural nets," *Connection Science*, vol. 8, no. 3, pp. 299–314, 1996.
- [24] P. Baraldi, E. Zio, G. Gola, D. Roverso, M. Hoffmann, "Robust nuclear signal reconstruction by a novel ensemble model aggregation procedure," *International Journal of Nuclear Knowledge Management*, vol. 4, pp. 34-41, 2010.
- [25] P. Baraldi, G. Gola, E. Zio, D. Roverso, M. Hoffmann, "A randomized model ensemble approach for reconstructing signals from faulty sensors," *Expert System With Application*, vol. 38, pp. 9211-9224, 2011.
- [26] H. Adeli, S. Kumar, "Distributed genetic algorithms for structural optimization," *Journal of Aerospace Engineering*, vol 8, no. 3, pp. 156-163, 1995.
- [27] A. Tucker, S. Swift, X. Liu, "Variable grouping in multivariate time series via correlation," *IEEE Transactions On Systems, Man, And Cybernetics—Part B: Cybernetics*, vol 31, 2001.
- [28] P. Baraldi, E. Zio, G. Gola, D. Roverso, M. Hoffmann, "Two novel procedures for aggregating randomized model ensemble outcomes for robust signal reconstruction in nuclear power plants monitoring systems," *Annals of Nuclear Engineering*, vol.- 38, pp. 212-220, 2011.
- [29] P. Baraldi, R. Canesi, E. Zio, R. Seraoui, R. Chevalier, "Genetic algorithm-based wrapper approach for grouping condition monitoring signal of nuclear power plant components," *Integrated Computer-Aided Engineering*, vol. 18, no. 3, pp. 221-234, 2011.
- [30] P. Baraldi, E. Zio, F. Di Maio, L. Pappaglione, R. Chevalier, R. Seraoui, "Differential evolution for optimal grouping of condition monitoring signals of nuclear components," *Proceedings of the European Safety and Reliability Conference 2011 (ESREL 2011)*, pp. 410-418, Troyes, France, 18-22 September 2011.
- [31] R. Kohavi, G. John, "Wrappers for feature subset selection," *Artificial Intelligence*, vol. 97, pp. 273-324, 1997.
- [32] K.C. Gross, W. Lu, "Early detection of signal and process anomalies in enterprise computing systems," *International Conference on Machine Learning and Applications - ICMLA*, pp. 204-210, 2002.
- [33] A. Wald, "Sequential Analysis," John Wiley & Sons, New York, NY, 1947.
- [34] S. Chen, M. Pecht, "Using cross validation for model parameter selection of sequential probability ratio test," *Expert Systems with Applications*, vol. 39, pp. 8467-8473, 2012
- [35] H. Sohn, D. W. Allen, K. Worden, C. R. Farrar, "Statistical damage classification using sequential probability ratio tests," *Structural Health Monitoring*, vol. 2, no. 1, pp. 57-74, 2003.
- [36] E. Samuel, "Randomized sequential tests. A comparison between curtailed single sampling plans and sequential probability ratio tests," *Journal of the American statistical association*, vol. 65, no. 329, pp. 431-437, 1970.
- [37] K. E. Humenik, K. C. Gross, "Sequential probability ratio tests for nuclear plant component surveillance," *Nuclear Technology*, vol. 93, 1991.
- [38] B.K. Gosh, "Sequential tests of statistical hypotheses," Addison-Wesley Publishing Company, Reading, Massachusetts, 1970.
- [39] S. Tantaratana, A.W. Lam, P.J. Vincent, "Noncoherent sequential acquisition of PN sequence for DS/SS communications with/without channel fading," *IEEE Transactions on communications*, vol. 43, no. 2, pp. 1738-1745, 1995.
- [40] D. C. Boes, F.A. Graybill, A.M. Mood, "Introduction to the theory of statistics," 3rd ed. New York: McGraw-Hill, 1974.
- [41] D.C. Montgomery, E.A. Peck, G.G. Vining, "Introduction to Linear Regression Analysis," 3rd Edition, New York, New York: John Wiley & Sons, 2001.

Francesco Di Maio (B.Sc. in Energetic Engineering, 2004; M.Sc. in Nuclear Engineering, 2006; Double EU-China PhD in Nuclear Engineering, 2010) is Assistant Professor in Nuclear Power Plants at Politecnico di Milano (Milano, Italy). His research aims at developing efficient computational methods and soft computing techniques (Neural Networks, Fuzzy Logic, Genetic Algorithms) for improving a number of open issues relevant for the safety and risk analysis of nuclear power plants, and for system monitoring, fault diagnosis, and prognosis. In 2009-2010 he has been Research Fellow of the Science and Technology Programme (STFP) in China, financed by the European Commission, and spent 24 months of practical research at Tsinghua University (Beijing, China). In 2010, he has been appointed as Senior Researcher in City University of Hong Kong. He has been collaborator of the Italian Embassy in China, and acted as technical committee member for a number of international conferences. He is co-author of 22 articles in peer-reviewed international journals, and 25 on proceedings of international conferences. He is Chair of the Italian IEEE Reliability Chapter.

Piero Baraldi (B.Sc in nuclear engng., Politecnico di Milano, 2002; Ph.D. in nuclear engng., Politecnico di Milano, 2006) is assistant professor of Nuclear Engineering at the department of Energy at the Politecnico di Milano. He is the current chairman of the European Safety and Reliability Association, ESRA, Technical Committee on Fault Diagnosis. He is functioning as Technical

Programme Chair of the 2013 Prognostics and System Health Management Conference (PHM-2013). He serves the Technical Programme Committees of the 2011 annual European Safety and Reliability conference (ESREL 2011) as coordinator of the "Fault Diagnosis, Prognosis and System Health Management" technical area and of the joint 2012 International Conference on Probabilistic Safety Assessment and Management (PSAM 10) & European Safety and Reliability conference (ESREL 2012) as track leader in "Non-probabilistic/Soft Methods in Reliability and Risk Analysis". He is serving as editorial board member of the international scientific journal "Journal of Risk and Reliability." His main research efforts are currently devoted to the development of methods and techniques (neural networks, fuzzy and neuro-fuzzy logic systems, ensemble system, kernel regression methods, clustering techniques, genetic algorithms) for system health monitoring, fault diagnosis, prognosis and maintenance optimization. He is also interested in methodologies for rationally handling the uncertainty and ambiguity in the information. He is co-author of 48 papers on international journals and 53 on proceedings of international conferences and serves as referee of 5 international journals.

Enrico Zio (B.Sc. in nuclear engineering, Politecnico di Milano, 1991; M.Sc. in mechanical engineering, UCLA, 1995; Ph.D., in nuclear engineering, Politecnico di Milano, 1995; and a Ph.D., in nuclear engineering, MIT, 1998). He is the Director of the Chair on Complex Systems and the Energy Challenge at Ecole Centrale Paris and Supelec, Fondation Europeenne pour l'Energie Nouvelle – EdF, and the full Professor of Computational Methods for Safety and Risk Analysis in Politecnico di Milano, Italy. He is President of Advanced Reliability, Availability and Maintainability of Industries and Services (ARAMIS) Ltd., and Chairman of the European Safety and Reliability Association, ESRA. His research topics are: analysis of the reliability, safety and security of complex systems under stationary and dynamic conditions, particularly by Monte Carlo simulation methods; development of soft computing techniques (neural networks, support vector machines, fuzzy and neuro-fuzzy logic systems, genetic algorithms, differential evolution) for safety, reliability and maintenance applications, system monitoring, fault diagnosis and prognosis, and optimal design. He is co-author of five international books and more than 200 papers on international journals, and serves as referee of more than 20 international journals.

Redouane Seraoui works for EDF in the Research & Development division. Following the graduation from the French engineering school "Ecole Supérieure d'Electricité," he works now on a series of large research projects involving collaboration between many leading academic and industry partners. These projects include the development of tools and methods for the monitoring of power plants' critical components, applied to the nuclear industry but also to the fossil and renewable sides.